

Product datasheet for **TA308054**

SUCLG2 Rabbit Polyclonal Antibody

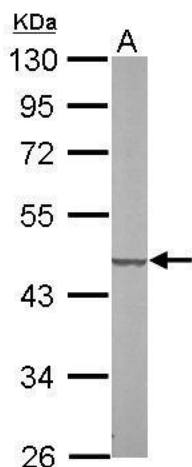
Product data:

Product Type:	Primary Antibodies
Applications:	IF, IHC, WB
Recommended Dilution:	ICC/IF:1:100-1:1000; IHC:1:100-1:1000; WB:1:1000-1:10000
Reactivity:	Human, Mouse
Host:	Rabbit
Isotype:	IgG
Clonality:	Polyclonal
Immunogen:	Recombinant fragment corresponding to a region within amino acids 1 and 234 of SUCLG2 (Uniprot ID#Q96I99)
Formulation:	0.1M Tris, 0.1M Glycine, 10% Glycerol (pH7). 0.01% Thimerosal was added as a preservative.
Concentration:	lot specific
Purification:	Purified by antigen-affinity chromatography.
Conjugation:	Unconjugated
Storage:	Store at -20°C as received.
Stability:	Stable for 12 months from date of receipt.
Predicted Protein Size:	47 kDa
Gene Name:	succinate-CoA ligase GDP-forming beta subunit
Database Link:	NP_003839 Entrez Gene 20917 Mouse Entrez Gene 8801 Human Q96I99
Synonyms:	GBETA
Protein Pathways:	Citrate cycle (TCA cycle), Metabolic pathways, Propanoate metabolism

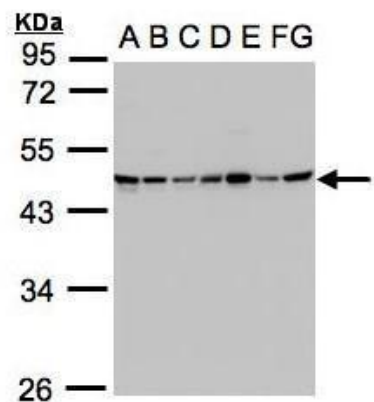


[View online »](#)

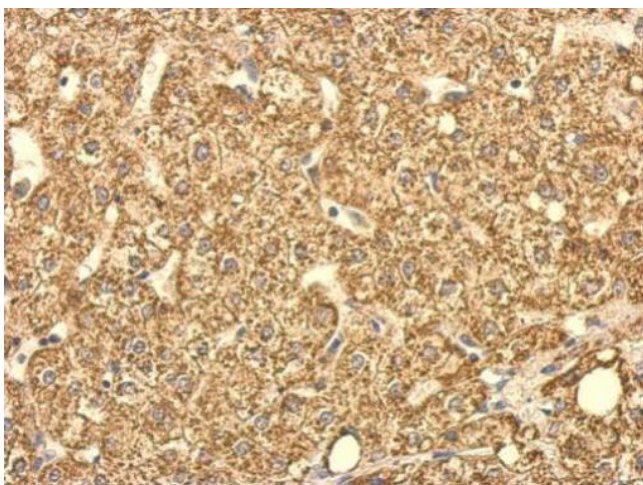
Product images:



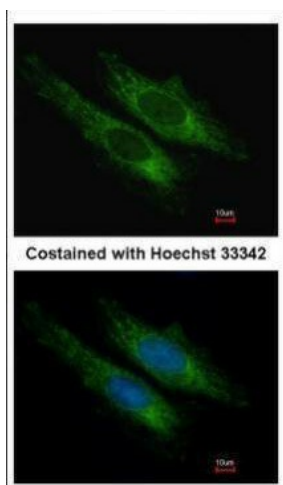
Sample (20 ug of whole cell lysate). A: mouse liver. 10% SDS PAGE. TA308054 diluted at 1:10000.



Sample (30ug whole cell lysate). A: 293T. B: A431. C: H1299. D: HeLa S3. E: Hep G2. F: MOLT4. G: Raji. 10% SDS PAGE. TA308054 diluted at 1:1000



SUCLG2 antibody detects SUCLG2 protein at cytosol on hepatoma by immunohistochemical analysis. Sample: Paraffin-embedded hepatoma. SUCLG2 antibody (TA308054) dilution: 1:500.



Immunofluorescence analysis of methanol-fixed HeLa, using SUCLG2 (TA308054) antibody at 1:200 dilution.