

Product datasheet for **TA308050**

GIRK1 (KCNJ3) Rabbit Polyclonal Antibody

Product data:

Product Type:	Primary Antibodies
Applications:	IHC, WB
Recommended Dilution:	IHC:1:100-1:1000; WB:1:500-1:3000
Reactivity:	Human (Predicted: Guinea Pig, Rhesus Monkey)
Host:	Rabbit
Isotype:	IgG
Clonality:	Polyclonal
Immunogen:	Recombinant fragment corresponding to a region within amino acids 248 and 501 of GIRK1 (Uniprot ID#P48549)
Formulation:	0.1M Tris, 0.1M Glycine, 10% Glycerol (pH7). 0.01% Thimerosal was added as a preservative.
Concentration:	lot specific
Purification:	Purified by antigen-affinity chromatography.
Conjugation:	Unconjugated
Storage:	Store at -20°C as received.
Stability:	Stable for 12 months from date of receipt.
Predicted Protein Size:	57 kDa
Gene Name:	potassium voltage-gated channel subfamily J member 3
Database Link:	NP_002230 Entrez Gene 3760 Human P48549
Background:	Potassium channels are present in most mammalian cells, where they participate in a wide range of physiologic responses. The protein encoded by this gene is an integral membrane protein and inward-rectifier type potassium channel. The encoded protein, which has a greater tendency to allow potassium to flow into a cell rather than out of a cell, is controlled by G-proteins and plays an important role in regulating heartbeat. It associates with three other G-protein-activated potassium channels to form a heteromultimeric pore-forming complex. [provided by RefSeq]
Synonyms:	GIRK1; KGA; KIR3.1

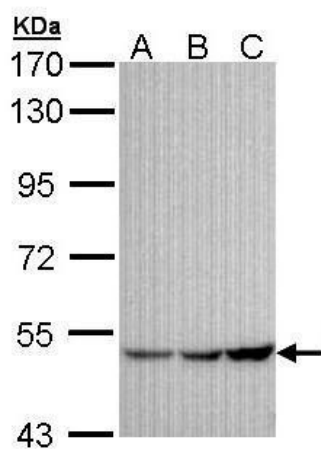


[View online »](#)

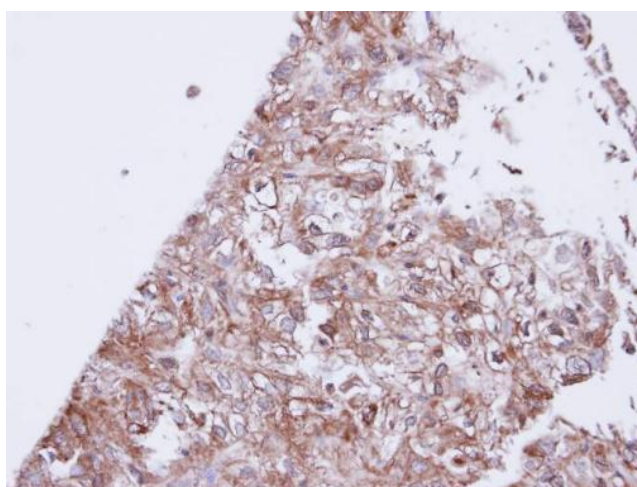
Note: Seq homology of immunogen across species: Rhesus Monkey (100%), Guinea pig (100%)

Protein Families: Druggable Genome, Ion Channels: Potassium, Transmembrane

Product images:



Sample (30 ug of whole cell lysate). A:A431. B: H1299. C: HeLa. 7.5% SDS PAGE. TA308050 diluted at 1:1000.



Immunohistochemical analysis of paraffin-embedded DU145 xenograft, using GIRK1 (TA308050) antibody at 1:100 dilution.