

## Product datasheet for **TA308048**

### MTGR1 (CBFA2T2) Rabbit Polyclonal Antibody

#### Product data:

Product Type:	Primary Antibodies
Applications:	IF, WB
Recommended Dilution:	ICC/IF:1:100-1:1000; WB:1:500-1:3000
Reactivity:	Human (Predicted: Mouse, Chicken, Rat)
Host:	Rabbit
Isotype:	IgG
Clonality:	Polyclonal
Immunogen:	Recombinant fragment corresponding to a region within amino acids 401 and 604 of CBFA2T2 (Uniprot ID#O43439)
Formulation:	0.1M Tris, 0.1M Glycine, 10% Glycerol (pH7). 0.01% Thimerosal was added as a preservative.
Purification:	Purified by antigen-affinity chromatography.
Conjugation:	Unconjugated
Storage:	Store at -20°C as received.
Stability:	Stable for 12 months from date of receipt.
Predicted Protein Size:	67 kDa
Gene Name:	CBFA2/RUNX1 translocation partner 2
Database Link:	<a href="#">NP_005084</a> <a href="#">Entrez Gene 12396 Mouse</a> <a href="#">Entrez Gene 296293 Rat</a> <a href="#">Entrez Gene 9139 Human</a> <a href="#">O43439</a>
Background:	In acute myeloid leukemia, especially in the M2 subtype, the t(8;21)(q22;q22) translocation is one of the most frequent karyotypic abnormalities. The translocation produces a chimeric gene made up of the 5'-region of the RUNX1 (AML1) gene fused to the 3'-region of the CBFA2T1 (MTG8) gene. The chimeric protein is thought to associate with the nuclear corepressor/histone deacetylase complex to block hematopoietic differentiation. The protein encoded by this gene binds to the AML1-MTG8 complex and may be important in promoting leukemogenesis. Several transcript variants are thought to exist for this gene, but the full-length natures of only three have been described. [provided by RefSeq]
Synonyms:	EHT; MTGR1; p85; ZMYND3

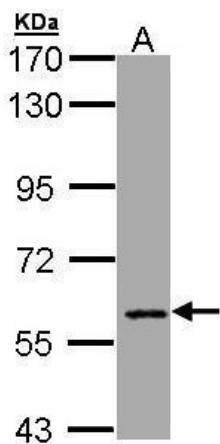


[View online »](#)

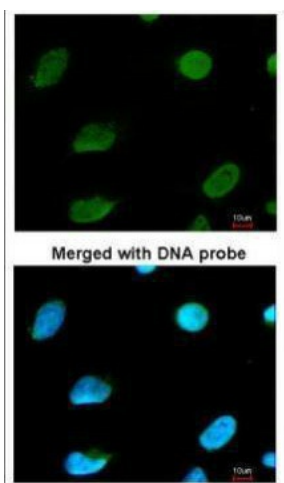
**Note:** Seq homology of immunogen across species: Mouse (95%), Chicken (80%), Rat (95%)

**Protein Families:** Transcription Factors

**Product images:**



Sample (30 ug of whole cell lysate). A: Hep G2. 7.5% SDS PAGE. TA308048 diluted at 1:1000.



Immunofluorescence analysis of paraformaldehyde-fixed HeLa, using CBFA2T2 (TA308048) antibody at 1:200 dilution.