

Product datasheet for **TA308047**

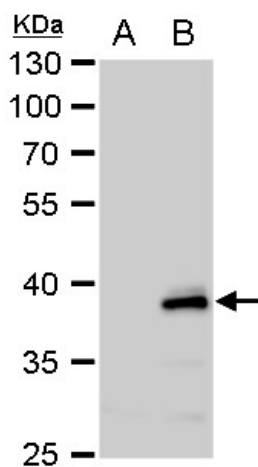
CHI3L2 Rabbit Polyclonal Antibody

Product data:

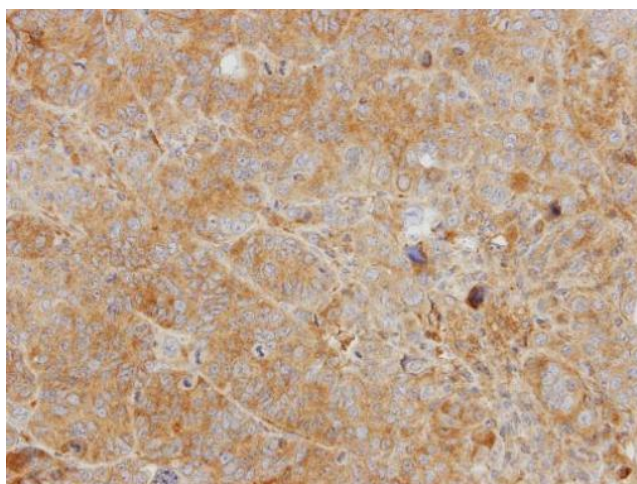
Product Type:	Primary Antibodies
Applications:	IHC, WB
Recommended Dilution:	IHC:1:100-1:1000; WB:1:1000-1:10000
Reactivity:	Human
Host:	Rabbit
Isotype:	IgG
Clonality:	Polyclonal
Immunogen:	Recombinant fragment corresponding to a region within amino acids 27 and 374 of YKL-39 (Uniprot ID#Q15782)
Formulation:	0.1M Tris, 0.1M Glycine, 10% Glycerol (pH7). 0.01% Thimerosal was added as a preservative.
Concentration:	lot specific
Purification:	Purified by antigen-affinity chromatography.
Conjugation:	Unconjugated
Storage:	Store at -20°C as received.
Stability:	Stable for 12 months from date of receipt.
Predicted Protein Size:	44 kDa
Gene Name:	chitinase 3 like 2
Database Link:	NP_001020368 Entrez Gene 1117 Human Q15782
Synonyms:	CHIL2; YKL-39; YKL39



[View online »](#)

Product images:

YKL-39 antibody [N1C3] detects YKL-39 protein by western blot analysis. A. 30 µg 293T whole cell extract. B. 30 µg whole extract of human CHI3L2-transfected 293T cells. 10 % SDS-PAGE. YKL-39 antibody [N1C3] (TA308047) dilution: 1:5000



Immunohistochemical analysis of paraffin-embedded SW480 xenograft, using CHI3L2 (TA308047) antibody at 1:500 dilution.