

Product datasheet for **TA308046**

CHIT1 Rabbit Polyclonal Antibody

Product data:

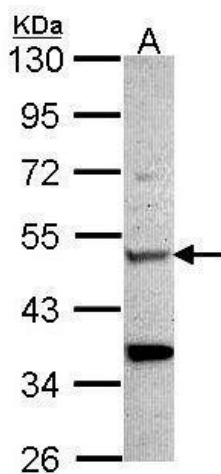
Product Type:	Primary Antibodies
Applications:	WB
Recommended Dilution:	WB:1:500-1:3000
Reactivity:	Human
Host:	Rabbit
Isotype:	IgG
Clonality:	Polyclonal
Immunogen:	Recombinant fragment corresponding to a region within amino acids 216 and 463 of Chitotriosidase (Uniprot ID#Q13231)
Formulation:	0.1M Tris, 0.1M Glycine, 10% Glycerol (pH7). 0.01% Thimerosal was added as a preservative.
Concentration:	lot specific
Purification:	Purified by antigen-affinity chromatography.
Conjugation:	Unconjugated
Storage:	Store at -20°C as received.
Stability:	Stable for 12 months from date of receipt.
Predicted Protein Size:	52 kDa
Gene Name:	chitinase 1
Database Link:	NP_003456 Entrez Gene 1118 Human Q13231
Background:	Chitotriosidase is secreted by activated human macrophages and is markedly elevated in plasma of Gaucher disease patients. The expression of chitotriosidase occurs only at a late stage of differentiation of monocytes to activated macrophages in culture. Human macrophages can synthesize a functional chitotriosidase, a highly conserved enzyme with a strongly regulated expression. This enzyme may play a role in the degradation of chitin-containing pathogens. [provided by RefSeq]
Synonyms:	CHI3; CHIT; CHITD


[View online »](#)

Protein Families: Secreted Protein, Transmembrane

Protein Pathways: Amino sugar and nucleotide sugar metabolism

Product images:



Sample (30 ug of whole cell lysate). A: Hela. 10% SDS PAGE. TA308046 diluted at 1:1000.