

Product datasheet for **TA308045**

SEC13L1 (SEC13) Rabbit Polyclonal Antibody

Product data:

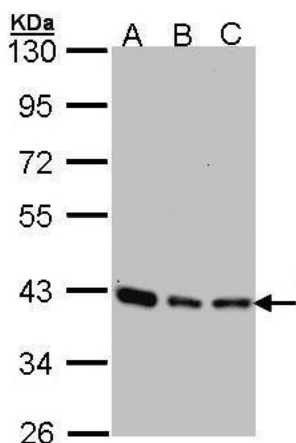
Product Type:	Primary Antibodies
Applications:	IF, IHC, IP, WB
Recommended Dilution:	ICC/IF:1:100-1:1000; IHC:1:100-1:1000; WB:1:500-1:3000
Reactivity:	Human (Predicted: Mouse, Rat, Xenopus, Zebrafish, Bovine, X. tropicalis)
Host:	Rabbit
Isotype:	IgG
Clonality:	Polyclonal
Immunogen:	Recombinant fragment corresponding to a region within amino acids 1 and 319 of SEC13L1 (Uniprot ID#P55735)
Formulation:	0.1M Tris, 0.1M Glycine, 10% Glycerol (pH7). 0.01% Thimerosal was added as a preservative.
Concentration:	lot specific
Purification:	Purified by antigen-affinity chromatography.
Conjugation:	Unconjugated
Storage:	Store at -20°C as received.
Stability:	Stable for 12 months from date of receipt.
Predicted Protein Size:	36 kDa
Gene Name:	SEC13 homolog, nuclear pore and COPII coat complex component
Database Link:	NP_001129704 Entrez Gene 110379 MouseEntrez Gene 297522 RatEntrez Gene 6396 Human P55735
Background:	The protein encoded by this gene belongs to the SEC13 family of WD-repeat proteins. It is a constituent of the endoplasmic reticulum and the nuclear pore complex. It has similarity to the yeast SEC13 protein, which is required for vesicle biogenesis from endoplasmic reticulum during the transport of proteins. Multiple alternatively spliced transcript variants have been found. [provided by RefSeq]
Synonyms:	D3S1231E; npp-20; SEC13L1; SEC13R



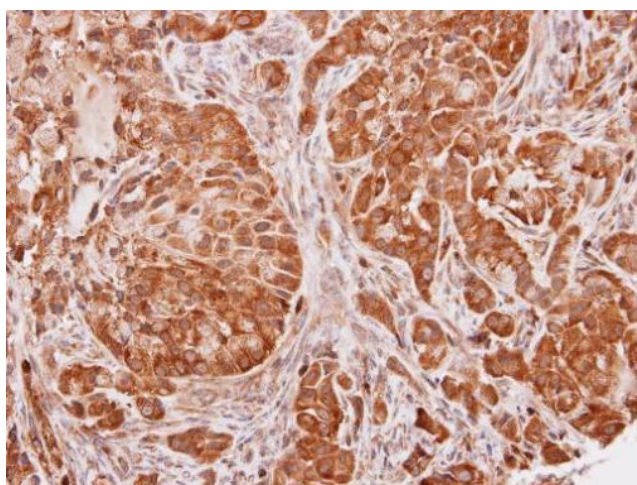
[View online »](#)

Note: Seq homology of immunogen across species: Mouse (97%), Rat (97%), *Xenopus laevis* (88%), Zebrafish (87%), Bovine (96%), *Xenopus tropicalis* (89%)

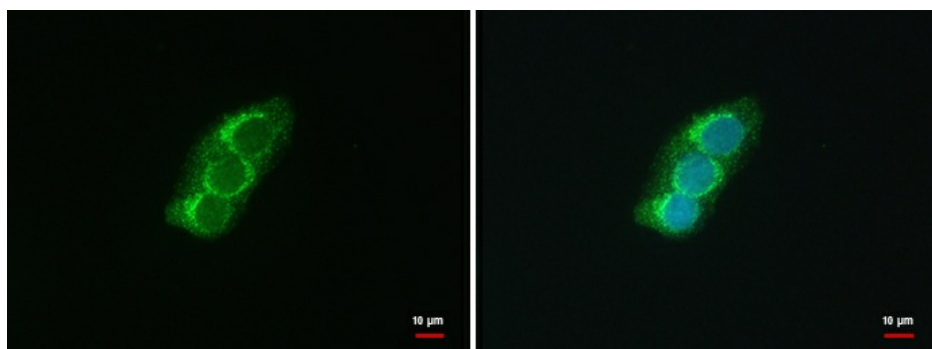
Product images:



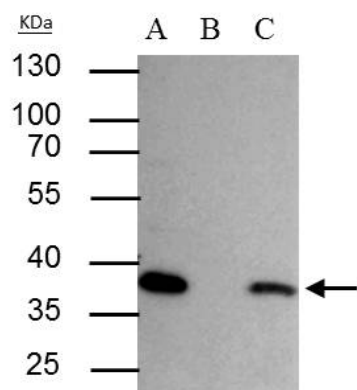
Sample (30 ug of whole cell lysate). A: 293T. B: A431. C: H1299. 10% SDS PAGE. TA308045 diluted at 1:1000.



Immunohistochemical analysis of paraffin-embedded A549 xenograft, using SEC13L1 (TA308045) antibody at 1:100 dilution.



SEC13L1 antibody [N1C3] detects SEC13L1 protein at COP II vesicles by immunofluorescent analysis. Sample: HepG2 cells were fixed in 4% paraformaldehyde at RT for 15 min. Green: SEC13L1 protein stained by SEC13L1 antibody [N1C3] (TA308045) diluted at 1:500



SEC13L1 antibody immunoprecipitates SEC13L1 protein in IP experiments. IP Sample: HepG2 whole cell lysate/extract A : 30 ug whole cell lysate/extract of SEC13L1 protein expressing HepG2 cells B : Control with 2.5 ug of pre-immune rabbit IgG C : Immunoprec