

Product datasheet for **TA308044**

GLO1 Rabbit Polyclonal Antibody

Product data:

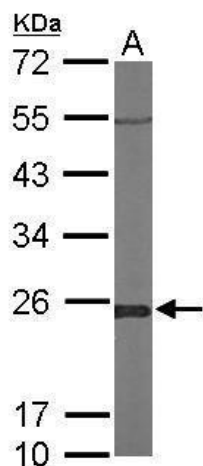
Product Type:	Primary Antibodies
Applications:	IF, IHC, WB
Recommended Dilution:	ICC/IF:1:100-1:1000; IHC:1:100-1:1000; WB:1:500-1:3000
Reactivity:	Human, Mouse (Predicted: Rat, Xenopus, Bovine, X. tropicalis)
Host:	Rabbit
Isotype:	IgG
Clonality:	Polyclonal
Immunogen:	Recombinant fragment corresponding to a region within amino acids 1 and 184 of Glyoxalase I (Uniprot ID#Q04760)
Formulation:	1XPBS, 20% Glycerol (pH7). 0.025% ProClin 300 was added as a preservative.
Concentration:	lot specific
Purification:	Purified by antigen-affinity chromatography.
Conjugation:	Unconjugated
Storage:	Store at -20°C as received.
Stability:	Stable for 12 months from date of receipt.
Predicted Protein Size:	21 kDa
Gene Name:	glyoxalase I
Database Link:	NP_006699 Entrez Gene 109801 MouseEntrez Gene 294320 RatEntrez Gene 2739 Human Q04760
Background:	The enzyme encoded by this gene is responsible for the catalysis and formation of S-lactoyl-glutathione from methylglyoxal condensation and reduced glutathione. Glyoxalase I is linked to HLA and is localized to 6p21.3-p21.1, between HLA and the centromere. [provided by RefSeq]
Synonyms:	GLOD1; GLYI; HEL-S-74
Note:	Seq homology of immunogen across species: Rat (91%), Xenopus laevis (82%), Bovine (90%), Xenopus tropicalis (82%)



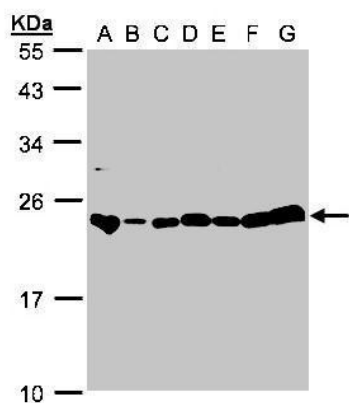
[View online »](#)

Protein Pathways: Pyruvate metabolism

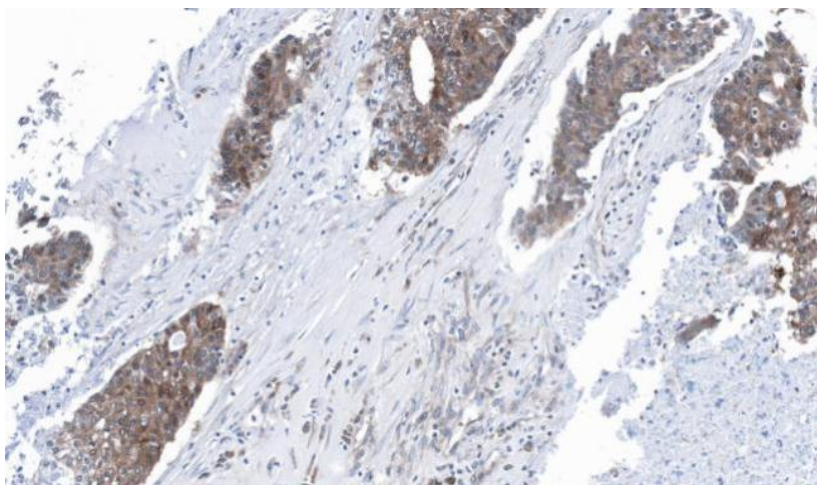
Product images:



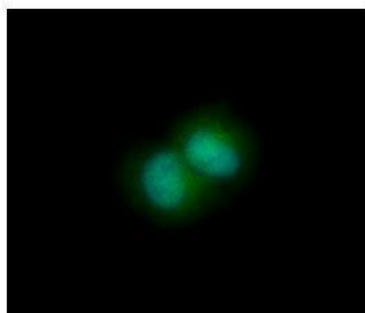
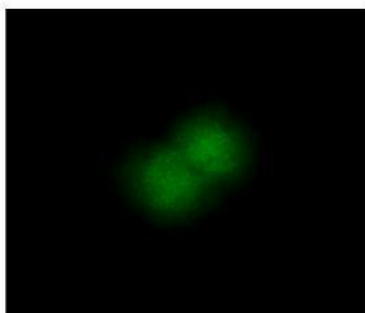
Sample (50 ug of whole cell lysate). A: Mouse brain. 12% SDS PAGE. TA308044 diluted at 1:1000.



Sample (30ug whole cell lysate). A: 293T. B: A431. C: H1299. D: HeLa S3. E: Hep G2. F: MOLT4. G: Raji. 12% SDS PAGE. TA308044 diluted at 1:1000



Immunohistochemical analysis of paraffin-embedded OVCA, using GLO1 (TA308044) antibody at 1:100 dilution.



Glyoxalase I antibody [N1C3] detects GLO1 protein at cytoplasm and nucleus by immunofluorescent analysis. Sample: HepG2 cells were fixed in 4% paraformaldehyde at RT for 15 min. Green: GLO1 protein stained by Glyoxalase I antibody [N1C3] (TA308044) dilute