

Product datasheet for **TA308042**

TRAM1 Rabbit Polyclonal Antibody

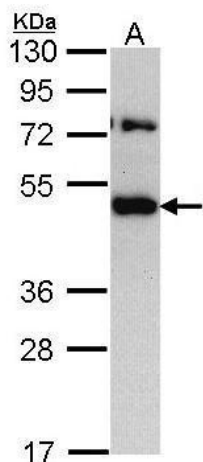
Product data:

Product Type:	Primary Antibodies
Applications:	IF, IHC, WB
Recommended Dilution:	ICC/IF:1:100-1:1000; IHC:1:100-1:1000; WB:1:500-1:3000
Reactivity:	Human (Predicted: Dog, Bovine, Rhesus Monkey, Mouse)
Host:	Rabbit
Isotype:	IgG
Clonality:	Polyclonal
Immunogen:	Synthetic peptide corresponding to a region within amino acids 310 and 374 of TRAM1 (Uniprot ID#Q15629)
Formulation:	0.1M Tris, 0.1M Glycine, 10% Glycerol (pH7). 0.01% Thimerosal was added as a preservative.
Concentration:	lot specific
Purification:	Purified by antigen-affinity chromatography.
Conjugation:	Unconjugated
Storage:	Store at -20°C as received.
Stability:	Stable for 12 months from date of receipt.
Predicted Protein Size:	43 kDa
Gene Name:	translocation associated membrane protein 1
Database Link:	NP_055109 Entrez Gene 72265 Mouse Entrez Gene 403948 Dog Entrez Gene 23471 Human Q15629
Synonyms:	PNAS8; TRAM; TRAMP
Note:	Seq homology of immunogen across species: Mouse (87%), Dog (87%), Rhesus Monkey (93%), Bovine (87%)
Protein Families:	Druggable Genome, Transmembrane

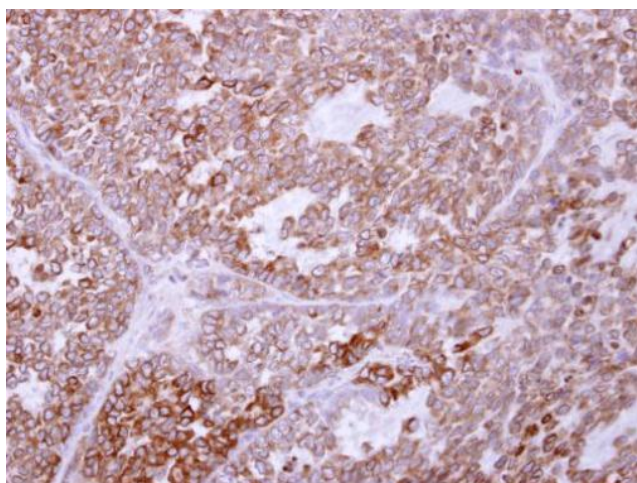


[View online »](#)

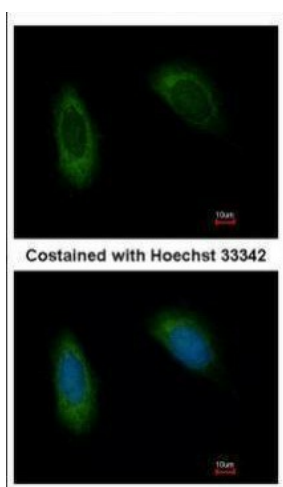
Product images:



Sample (30 ug of whole cell lysate). A: H1299. 10% SDS PAGE. TA308042 diluted at 1:1000.



TRAM1 antibody [C2C3], C-term detects TRAM1 protein at cytoplasm on AGS xenograft by immunohistochemical analysis. Sample: Paraffin-embedded AGS xenograft. TRAM1 antibody [C2C3], C-term (TA308042) dilution: 1:500.



Immunofluorescence analysis of methanol-fixed HeLa, using TRAM1 (TA308042) antibody at 1:500 dilution.