

Product datasheet for **TA308041**

SCIN Rabbit Polyclonal Antibody

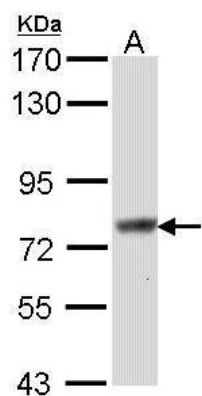
Product data:

Product Type:	Primary Antibodies
Applications:	IF, WB
Recommended Dilution:	ICC/IF:1:100-1:1000; WB:1:500-1:3000
Reactivity:	Human (Predicted: Mouse, Chicken, Rat)
Host:	Rabbit
Isotype:	IgG
Clonality:	Polyclonal
Immunogen:	Recombinant fragment corresponding to a region within amino acids 281 and 585 of SCIN (Uniprot ID#Q9Y6U3)
Formulation:	0.1M Tris, 0.1M Glycine, 10% Glycerol (pH7). 0.01% Thimerosal was added as a preservative.
Concentration:	lot specific
Purification:	Purified by antigen-affinity chromatography.
Conjugation:	Unconjugated
Storage:	Store at -20°C as received.
Stability:	Stable for 12 months from date of receipt.
Predicted Protein Size:	81 kDa
Gene Name:	scinderin
Database Link:	NP_001106177 Entrez Gene 20259 Mouse Entrez Gene 298975 Rat Entrez Gene 85477 Human Q9Y6U3
Synonyms:	KIAA1905
Note:	Seq homology of immunogen across species: Mouse (92%), Chicken (83%), Rat (92%)
Protein Pathways:	Fc gamma R-mediated phagocytosis, Regulation of actin cytoskeleton

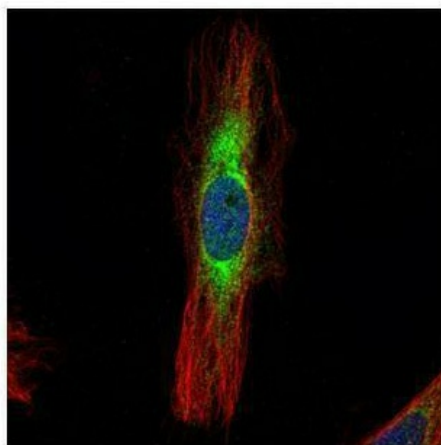


[View online »](#)

Product images:



Sample (30 ug of whole cell lysate). A: Hep G2.
7.5% SDS PAGE. TA308041 diluted at 1:1000.



Confocal immunofluorescence analysis (Olympus FV10i) of methanol-fixed HeLa, using SCIN (TA308041) antibody (Green) at 1:500 dilution. Alpha-tubulin filaments were labeled with anti-alpha tubulin antibody (Red) at 1:2000.