

Product datasheet for **TA308040**

PTS Rabbit Polyclonal Antibody

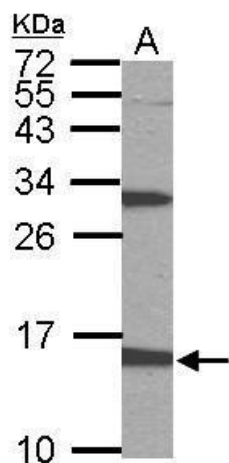
Product data:

Product Type:	Primary Antibodies
Applications:	IF, IHC, WB
Recommended Dilution:	ICC/IF:1:100-1:1000; IHC:1:100-1:1000; WB:1:500-1:3000
Reactivity:	Human (Predicted: Bovine)
Host:	Rabbit
Isotype:	IgG
Clonality:	Polyclonal
Immunogen:	Recombinant fragment corresponding to a region within amino acids 1 and 145 of PTS (Uniprot ID#Q03393)
Formulation:	0.1M Tris, 0.1M Glycine, 10% Glycerol (pH7). 0.01% Thimerosal was added as a preservative.
Concentration:	lot specific
Purification:	Purified by antigen-affinity chromatography.
Conjugation:	Unconjugated
Storage:	Store at -20°C as received.
Stability:	Stable for 12 months from date of receipt.
Predicted Protein Size:	16 kDa
Gene Name:	6-pyruvoyltetrahydropterin synthase
Database Link:	NP_000308 Entrez Gene 5805 Human Q03393
Background:	The enzyme encoded by this gene catalyzes the elimination of inorganic triphosphate from dihydroneopterin triphosphate, which is the second and irreversible step in the biosynthesis of tetrahydrobiopterin from GTP. Tetrahydrobiopterin, also known as BH(4), is an essential cofactor and regulator of various enzyme activities, including enzymes involved in serotonin biosynthesis and NO synthase activity. Mutations in this gene result in hyperphenylalaninemia. [provided by RefSeq]
Synonyms:	PTPS

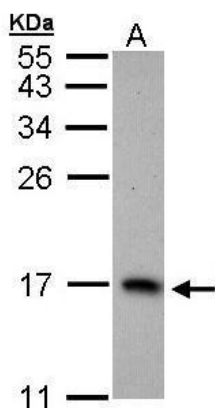


[View online »](#)

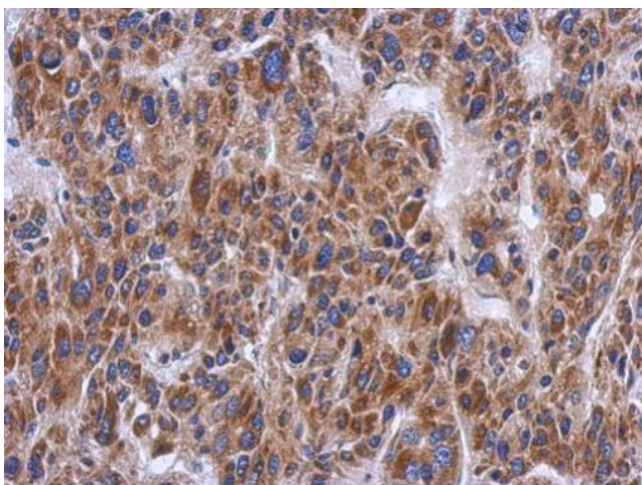
Note: Seq homology of immunogen across species: Bovine (84%)
Protein Families: Druggable Genome
Protein Pathways: Folate biosynthesis, Metabolic pathways

Product images:

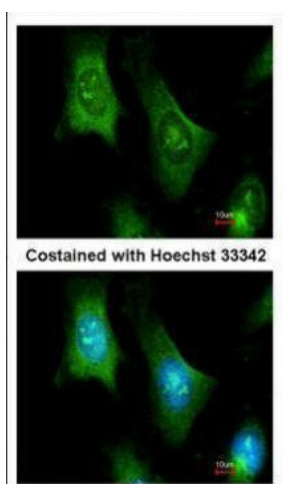
Sample (50 ug of whole cell lysate). A: mouse stomach. 15% SDS PAGE. TA308040 diluted at 1:1000.



Sample (30 ug of whole cell lysate). A: H1299. 15% SDS PAGE. TA308040 diluted at 1:1000.



Immunohistochemical analysis of paraffin-embedded Hepatoma, using PTS (TA308040) antibody at 1:500 dilution.



Immunofluorescence analysis of methanol-fixed HeLa, using PTS (TA308040) antibody at 1:100 dilution.