

## Product datasheet for **TA308039**

### CYB5R1 Rabbit Polyclonal Antibody

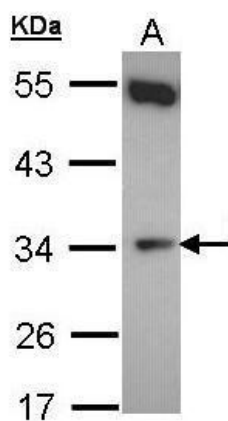
#### Product data:

Product Type:	Primary Antibodies
Applications:	WB
Recommended Dilution:	WB:1:500-1:3000
Reactivity:	Human (Predicted: Rhesus Monkey)
Host:	Rabbit
Isotype:	IgG
Clonality:	Polyclonal
Immunogen:	Recombinant fragment corresponding to a region within amino acids 1 and 275 of b5R.1 (Uniprot ID#Q9UHQ9)
Formulation:	0.1M Tris, 0.1M Glycine, 10% Glycerol (pH7). 0.01% Thimerosal was added as a preservative.
Concentration:	lot specific
Purification:	Purified by antigen-affinity chromatography.
Conjugation:	Unconjugated
Storage:	Store at -20°C as received.
Stability:	Stable for 12 months from date of receipt.
Predicted Protein Size:	34 kDa
Gene Name:	cytochrome b5 reductase 1
Database Link:	<a href="#">NP_057327</a> <a href="#">Entrez Gene 51706 Human Q9UHQ9</a>
Synonyms:	B5R.1; B5R1; B5R2; humb5R2; NQO3A2
Note:	Seq homology of immunogen across species: Rhesus Monkey (100%)
Protein Families:	Druggable Genome, Transmembrane
Protein Pathways:	Amino sugar and nucleotide sugar metabolism



[View online »](#)

## Product images:



Sample (30 ug of whole cell lysate). A: HeLa. 10% SDS PAGE. TA308039 diluted at 1:500.