

Product datasheet for **TA308037**

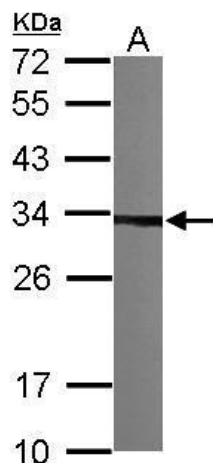
CKAP1 (TBCB) Rabbit Polyclonal Antibody

Product data:

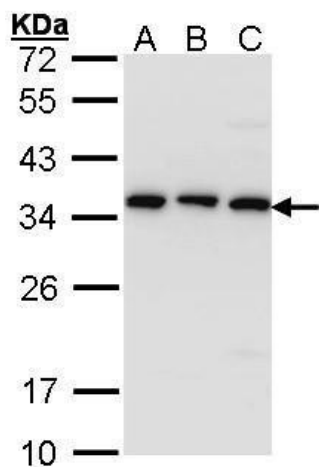
Product Type:	Primary Antibodies
Applications:	IF, IHC, WB
Recommended Dilution:	ICC/IF:1:100-1:1000; IHC:1:100-1:1000; WB:1:500-1:3000
Reactivity:	Human, Mouse (Predicted: Rat, Bovine)
Host:	Rabbit
Isotype:	IgG
Clonality:	Polyclonal
Immunogen:	Recombinant fragment corresponding to a region within amino acids 1 and 243 of CKAP1 (Uniprot ID#Q99426)
Formulation:	0.1M Tris, 0.1M Glycine, 10% Glycerol (pH7). 0.01% Thimerosal was added as a preservative.
Concentration:	lot specific
Purification:	Purified by antigen-affinity chromatography.
Conjugation:	Unconjugated
Storage:	Store at -20°C as received.
Stability:	Stable for 12 months from date of receipt.
Predicted Protein Size:	27 kDa
Gene Name:	tubulin folding cofactor B
Database Link:	NP_001272 Entrez Gene 66411 MouseEntrez Gene 292777 RatEntrez Gene 1155 Human Q99426
Synonyms:	CG22; CKAP1; CKAPI
Note:	Seq homology of immunogen across species: Rat (89%), Bovine (86%)



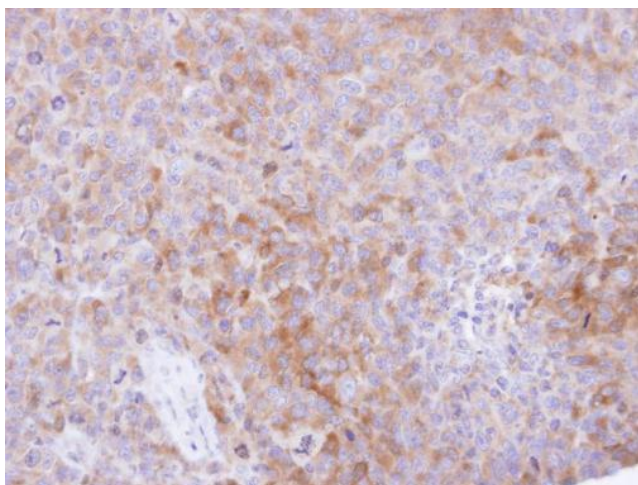
[View online »](#)

Product images:


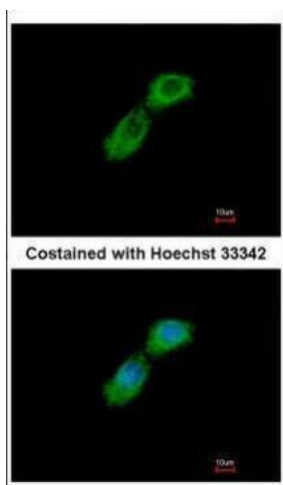
Sample (30 ug of whole cell lysate). A: NIH-3T3. 12% SDS PAGE. TA308037 diluted at 1:1000.



Sample (30 ug of whole cell lysate). A: A431. B: H1299. C: Hela. 12% SDS PAGE. TA308037 diluted at 1:1000.



Immunohistochemical analysis of paraffin-embedded H1299 xenograft, using CKAP1 (TA308037) antibody at 1:500 dilution.



Immunofluorescence analysis of methanol-fixed A549, using CKAP1 (TA308037) antibody at 1:500 dilution.