

Product datasheet for **TA308036**

Pancreatic Lipase (PNLIP) Rabbit Polyclonal Antibody

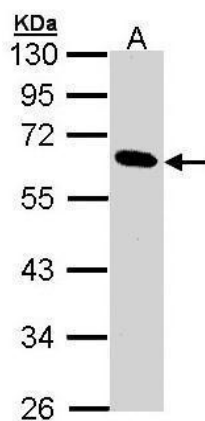
Product data:

Product Type:	Primary Antibodies
Applications:	IF, IHC, WB
Recommended Dilution:	ICC/IF:1:100-1:1000; IHC:1:100-1:1000; WB:1:500-1:3000
Reactivity:	Human (Predicted: Pig, Rabbit, Bovine)
Host:	Rabbit
Isotype:	IgG
Clonality:	Polyclonal
Immunogen:	Recombinant fragment corresponding to a region within amino acids 21 and 300 of Pancreatic Lipase (Uniprot ID#P16233)
Formulation:	0.1M Tris, 0.1M Glycine, 10% Glycerol (pH7). 0.01% Thimerosal was added as a preservative.
Concentration:	lot specific
Purification:	Purified by antigen-affinity chromatography.
Conjugation:	Unconjugated
Storage:	Store at -20°C as received.
Stability:	Stable for 12 months from date of receipt.
Predicted Protein Size:	51 kDa
Gene Name:	pancreatic lipase
Database Link:	NP_000927 Entrez Gene 5406 Human P16233
Background:	This gene is a member of the lipase gene family. It encodes a carboxyl esterase that hydrolyzes insoluble, emulsified triglycerides, and is essential for the efficient digestion of dietary fats. This gene is expressed specifically in the pancreas. [provided by RefSeq]
Synonyms:	PL; PNLIPD; PTL
Note:	Seq homology of immunogen across species: Pig (90%), Rabbit (84%), Bovine (85%)
Protein Families:	Druggable Genome, Secreted Protein
Protein Pathways:	Glycerolipid metabolism, Metabolic pathways

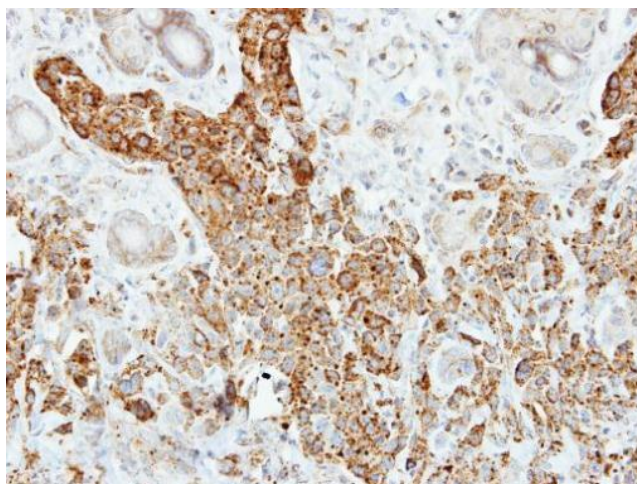


[View online »](#)

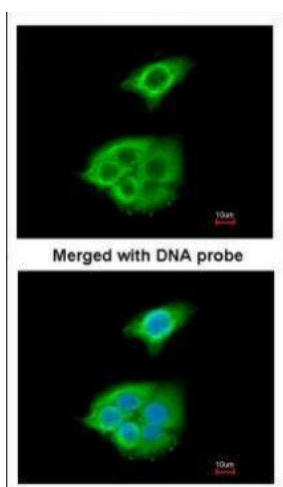
Product images:



Sample (30 ug of whole cell lysate). A: 293T. 10% SDS PAGE. TA308036 diluted at 1:1000



Immunohistochemical analysis of paraffin-embedded SCM-1 xenograft, using Pancreatic Lipase (TA308036) antibody at 1:500 dilution.



Immunofluorescence analysis of paraformaldehyde-fixed A549, using Pancreatic Lipase (TA308036) antibody at 1:200 dilution.