

## Product datasheet for **TA308035**

### Pyrophosphatase 1 (PPA1) Rabbit Polyclonal Antibody

#### Product data:

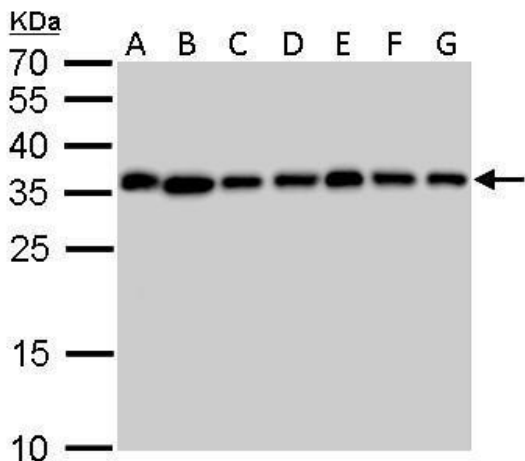
Product Type:	Primary Antibodies
Applications:	IF, IHC, WB
Recommended Dilution:	ICC/IF:1:100-1:1000; IHC:1:100-1:1000; WB:1:5000-1:20000
Reactivity:	Human (Predicted: Mouse, Rat, Bovine)
Host:	Rabbit
Isotype:	IgG
Clonality:	Polyclonal
Immunogen:	Recombinant fragment corresponding to a region within amino acids 1 and 289 of PPA1 (Uniprot ID#Q15181)
Formulation:	0.1M Tris, 0.1M Glycine, 10% Glycerol (pH7). 0.01% Thimerosal was added as a preservative.
Concentration:	lot specific
Purification:	Purified by antigen-affinity chromatography.
Conjugation:	Unconjugated
Storage:	Store at -20°C as received.
Stability:	Stable for 12 months from date of receipt.
Predicted Protein Size:	33 kDa
Gene Name:	pyrophosphatase (inorganic) 1
Database Link:	<a href="#">NP_066952</a> <a href="#">Entrez Gene 67895 MouseEntrez Gene 294504 RatEntrez Gene 5464 Human Q15181</a>
Background:	The protein encoded by this gene is a member of the inorganic pyrophosphatase (PPase) family. PPases catalyze the hydrolysis of pyrophosphate to inorganic phosphate, which is important for the phosphate metabolism of cells. Studies of a similar protein in bovine suggested a cytoplasmic localization of this enzyme. [provided by RefSeq]
Synonyms:	HEL-S-66p; IOPPP; PP; PP1; SID6-8061
Note:	Seq homology of immunogen across species: Mouse (94%), Rat (93%), Bovine (95%)
Protein Families:	ES Cell Differentiation/IPS



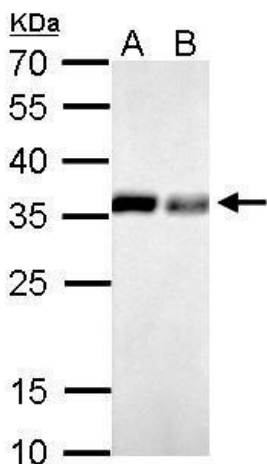
[View online »](#)

Protein Pathways: Oxidative phosphorylation

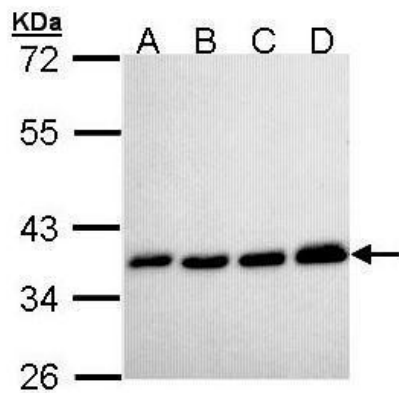
**Product images:**



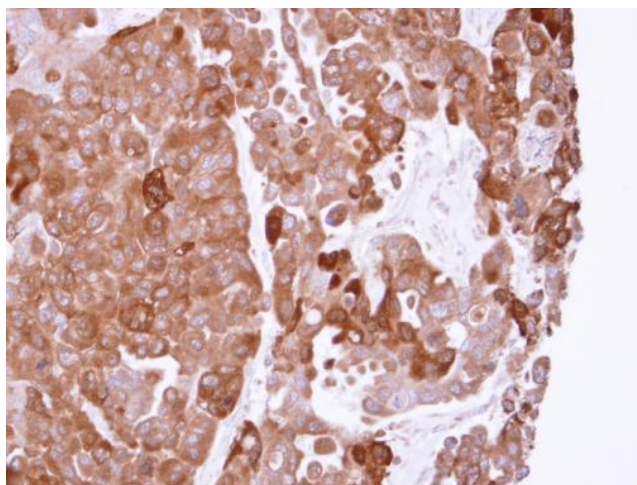
PPA1 antibody detects PPA1 protein by Western blot analysis. A. 30 ug Neuro2A whole cell lysate/extract. B. 30 ug GL261 whole cell lysate/extract. C. 30 ug C8D30 whole cell lysate/extract. D. 30 ug NIH-3T3 whole cell lysate/extract. E. 30 ug BCL-1 whole c



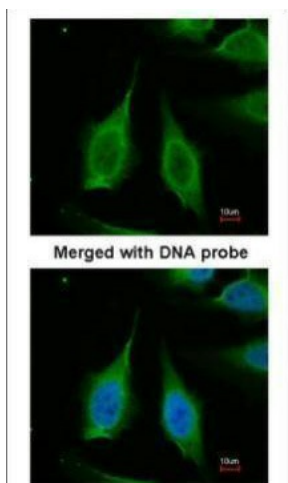
PPA1 antibody detects PPA1 protein by Western blot analysis. A. 30 ug PC-12 whole cell lysate/extract. B. 30 ug Rat2 whole cell lysate/extract. 12 % SDS-PAGE. PPA1 antibody (TA308035) dilution: 1:1000



Sample (30 ug of whole cell lysate). A: H1299. B: HeLa. C: Hep G2. D: Molt-4. 12% SDS PAGE. TA308035 diluted at 1:10000



Immunohistochemical analysis of paraffin-embedded OVCAR3 xenograft, using PPA1 (TA308035) antibody at 1:500 dilution.



Immunofluorescence analysis of paraformaldehyde-fixed HeLa, using PPA1 (TA308035) antibody at 1:200 dilution.