

Product datasheet for **TA308034**

Aminoacylase 1 (ACY1) Rabbit Polyclonal Antibody

Product data:

Product Type:	Primary Antibodies
Applications:	IF, IHC, WB
Recommended Dilution:	ICC/IF:1:100-1:1000; WB:1:500-1:3000
Reactivity:	Human (Predicted: Mouse, Pig, Rat, Bovine)
Host:	Rabbit
Isotype:	IgG
Clonality:	Polyclonal
Immunogen:	Recombinant fragment corresponding to a region within amino acids 89 and 366 of Aminoacylase 1 (Uniprot ID#Q03154)
Formulation:	0.1M Tris, 0.1M Glycine, 10% Glycerol (pH7). 0.01% Thimerosal was added as a preservative.
Concentration:	lot specific
Purification:	Purified by antigen-affinity chromatography.
Conjugation:	Unconjugated
Storage:	Store at -20°C as received.
Stability:	Stable for 12 months from date of receipt.
Predicted Protein Size:	46 kDa
Gene Name:	aminoacylase 1
Database Link:	NP_000657 Entrez Gene 109652 MouseEntrez Gene 300981 RatEntrez Gene 95 Human Q03154

Background: Aminoacylase-1 is a cytosolic, homodimeric, zinc-binding enzyme that catalyzes the hydrolysis of acylated L-amino acids to L-amino acids and acyl group, and has been postulated to function in the catabolism and salvage of acylated amino acids. ACY1 has been assigned to chromosome 3p21.1, a region reduced to homozygosity in small-cell lung cancer (SCLC), and its expression has been reported to be reduced or undetectable in SCLC cell lines and tumors. The amino acid sequence of human aminoacylase-1 is highly homologous to the porcine counterpart, and ACY1 is the first member of a new family of zinc-binding enzymes. [provided by RefSeq]



[View online »](#)

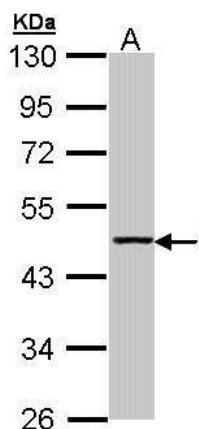
Synonyms: ACY-1; ACY1D; HEL-S-5

Note: Seq homology of immunogen across species: Mouse (85%), Pig (86%), Rat (86%), Bovine (87%)

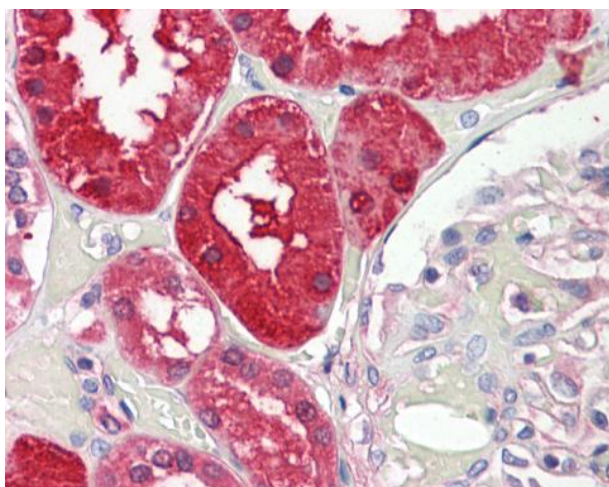
Protein Families: Protease

Protein Pathways: Arginine and proline metabolism, Metabolic pathways

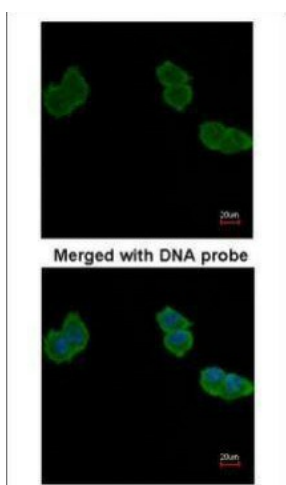
Product images:



Sample (30 ug of whole cell lysate). A: H1299. 10% SDS PAGE. TA308034 diluted at 1:1000.



Aminoacylase 1 antibody [N2C3-2] detects Aminoacylase-1 protein at cytoplasm on placenta by immunohistochemical analysis. Sample: Paraffin-embedded placenta. Aminoacylase 1 antibody [N2C3-2] (TA308034) dilution: 1:100.



Immunofluorescence analysis of paraformaldehyde-fixed A431, using Aminoacylase-1 (TA308034) antibody at 1:200 dilution.