

Product datasheet for **TA308029**

C9orf96 (STKLD1) Rabbit Polyclonal Antibody

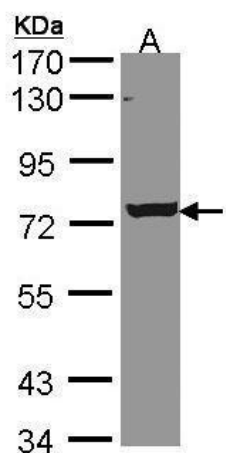
Product data:

Product Type:	Primary Antibodies
Applications:	IF, WB
Recommended Dilution:	ICC/IF:1:100-1:1000; WB:1:1000-1:10000
Reactivity:	Human
Host:	Rabbit
Isotype:	IgG
Clonality:	Polyclonal
Immunogen:	Recombinant fragment contain a sequence corresponding to a region within amino acids 438 and 614 of LOC169436 (Uniprot ID#Q8NE28)
Formulation:	0.1M Tris, 0.1M Glycine, 10% Glycerol (pH7). 0.01% Thimerosal was added as a preservative.
Concentration:	lot specific
Purification:	Purified by antigen-affinity chromatography.
Conjugation:	Unconjugated
Storage:	Store at -20°C as received.
Stability:	Stable for 12 months from date of receipt.
Predicted Protein Size:	76 kDa
Gene Name:	serine/threonine kinase-like domain containing 1
Database Link:	NP_714921 Entrez Gene 169436 Human Q8NE28
Synonyms:	C9orf96; SgK071; Sk521
Protein Families:	Protein Kinase

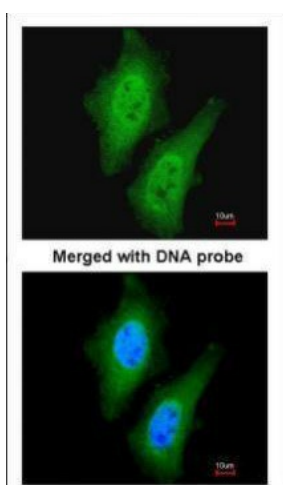


[View online »](#)

Product images:



Sample (30 ug of whole cell lysate). A: A431. 7.5% SDS PAGE. TA308029 diluted at 1:5000



Immunofluorescence analysis of paraformaldehyde-fixed HeLa, using LOC169436 (TA308029) antibody at 1:200 dilution.