

## Product datasheet for **TA308028**

### PECR Rabbit Polyclonal Antibody

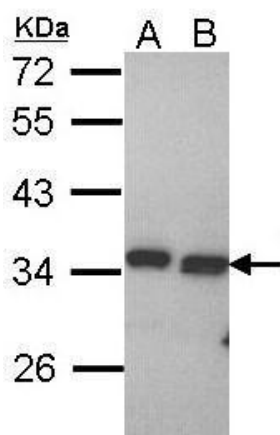
#### Product data:

Product Type:	Primary Antibodies
Applications:	IF, IHC, WB
Recommended Dilution:	ICC/IF:1:100-1:1000; IHC:1:100-1:1000; WB:1:500-1:3000
Reactivity:	Human
Host:	Rabbit
Isotype:	IgG
Clonality:	Polyclonal
Immunogen:	Synthetic peptide corresponding to a region within amino acids 241 and 303 of PECR (Uniprot ID#Q9BY49)
Formulation:	0.1M Tris, 0.1M Glycine, 10% Glycerol (pH7). 0.01% Thimerosal was added as a preservative.
Concentration:	lot specific
Purification:	Purified by antigen-affinity chromatography.
Conjugation:	Unconjugated
Storage:	Store at -20°C as received.
Stability:	Stable for 12 months from date of receipt.
Predicted Protein Size:	33 kDa
Gene Name:	peroxisomal trans-2-enoyl-CoA reductase
Database Link:	<a href="#">NP_060911</a> <a href="#">Entrez Gene 55825 Human</a> <a href="#">Q9BY49</a>
Synonyms:	DCRRP; HPDHASE; HSA250303; PVIARL; SDR29C1; TERP
Protein Families:	Druggable Genome
Protein Pathways:	Biosynthesis of unsaturated fatty acids

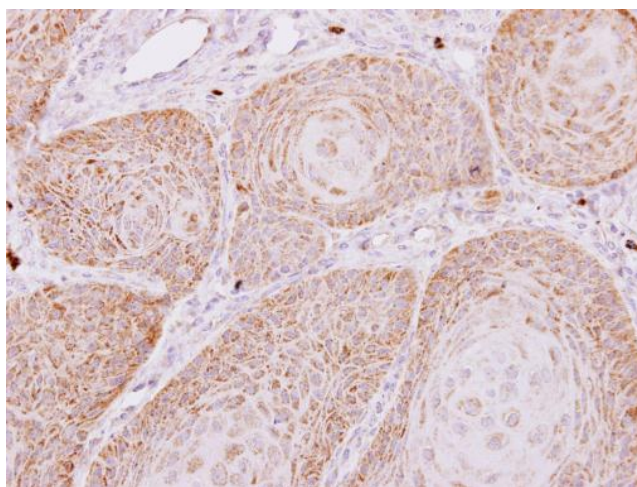


[View online »](#)

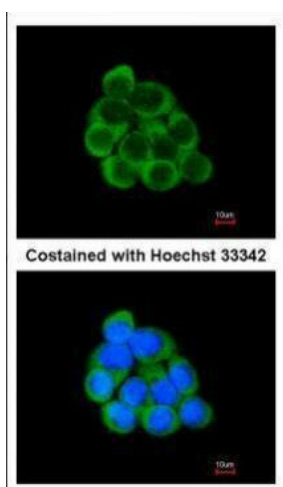
## Product images:



Sample (30 ug of whole cell lysate). A: HeLa. B: Hep G2. 12% SDS PAGE. TA308028 diluted at 1:1000.



PECR antibody [C2C3], C-term detects PCR protein at peroxisome and cytoplasm on Cal27 xenograft by immunohistochemical analysis. Sample: Paraffin-embedded Cal27 xenograft. PCR antibody [C2C3], C-term (TA308028) dilution: 1:500.



Immunofluorescence analysis of methanol-fixed A431, using PECR (TA308028) antibody at 1:200 dilution.