

Product datasheet for **TA308026**

GOLGA3 Rabbit Polyclonal Antibody

Product data:

Product Type:	Primary Antibodies
Applications:	IF, IHC, WB
Recommended Dilution:	ICC/IF:1:100-1:1000; IHC:1:100-1:1000; WB:1:500-1:3000
Reactivity:	Human
Host:	Rabbit
Isotype:	IgG
Clonality:	Polyclonal
Immunogen:	Synthetic peptide corresponding to a region within amino acids 1436 and 1498 of GOLGA3 (Uniprot ID#Q08378)
Formulation:	0.1M Tris, 0.1M Glycine, 20% Glycerol (pH7). 0.01% Thimerosal was added as a preservative.
Concentration:	lot specific
Purification:	Purified by antigen-affinity chromatography.
Conjugation:	Unconjugated
Storage:	Store at -20°C as received.
Stability:	Stable for 12 months from date of receipt.
Predicted Protein Size:	167 kDa
Gene Name:	golgin A3
Database Link:	NP_005886 Entrez Gene 2802 Human Q08378

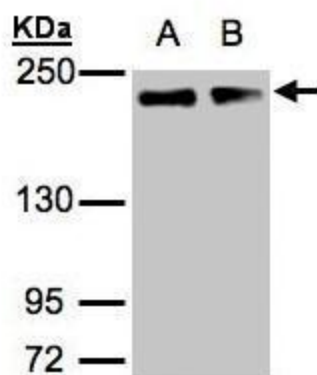
Background: The Golgi apparatus, which participates in glycosylation and transport of proteins and lipids in the secretory pathway, consists of a series of stacked cisternae (flattened membrane sacs). Interactions between the Golgi and microtubules are thought to be important for the reorganization of the Golgi after it fragments during mitosis. This gene encodes a member of the golgin family of proteins which are localized to the Golgi. Its encoded protein has been postulated to play a role in nuclear transport and Golgi apparatus localization. Several alternatively spliced transcript variants of this gene have been described, but the full-length nature of these variants has not been determined. [provided by RefSeq]



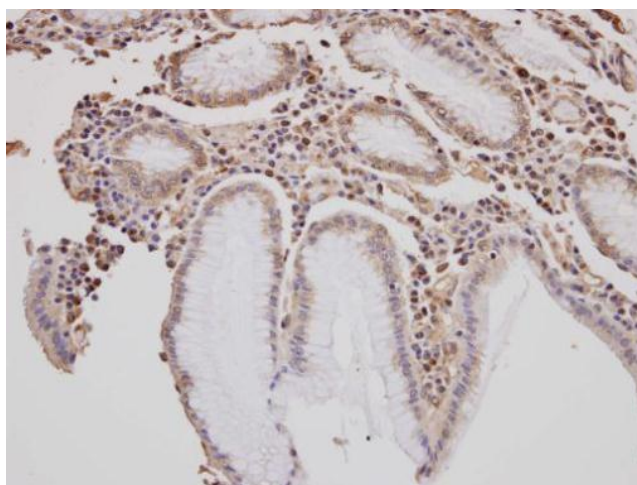
[View online »](#)

Synonyms: GCP170; MEA-2

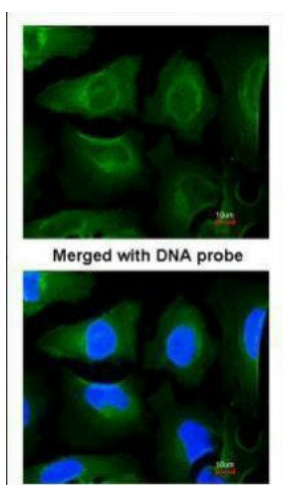
Product images:



Sample (30 ug of whole cell lysate). A:A431.
B:H1299. 5% SDS PAGE. TA308026 diluted at
1:1000



Immunohistochemical analysis of paraffin-
embedded gastric tissue, using GOLGA3
(TA308026) antibody at 1:100 dilution.



Immunofluorescence analysis of paraformaldehyde-fixed HeLa, using GOLGA3 (TA308026) antibody at 1:200 dilution.