

Product datasheet for **TA308023**

IVD Rabbit Polyclonal Antibody

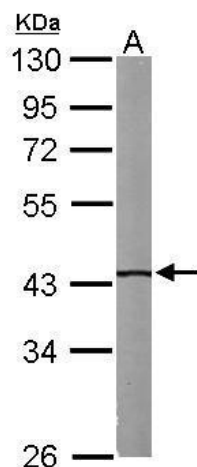
Product data:

Product Type:	Primary Antibodies
Applications:	IF, IHC, WB
Recommended Dilution:	ICC/IF:1:100-1:1000; IHC:1:100-1:1000; WB:1:500-1:3000
Reactivity:	Human, Mouse
Host:	Rabbit
Isotype:	IgG
Clonality:	Polyclonal
Immunogen:	Recombinant fragment corresponding to a region within amino acids 1 and 222 of IVD (Uniprot ID#P26440)
Formulation:	0.1M Tris, 0.1M Glycine, 20% Glycerol (pH7). 0.01% Thimerosal was added as a preservative.
Concentration:	lot specific
Purification:	Purified by antigen-affinity chromatography.
Conjugation:	Unconjugated
Storage:	Store at -20°C as received.
Stability:	Stable for 12 months from date of receipt.
Predicted Protein Size:	46 kDa
Gene Name:	isovaleryl-CoA dehydrogenase
Database Link:	NP_002216 Entrez Gene 56357 Mouse Entrez Gene 3712 Human P26440
Background:	Isovaleryl-CoA dehydrogenase (IVD) is a mitochondrial matrix enzyme that catalyzes the third step in leucine catabolism. The genetic deficiency of IVD results in an accumulation of isovaleric acid, which is toxic to the central nervous system and leads to isovaleric acidemia. [provided by RefSeq]
Synonyms:	ACAD2
Protein Families:	Druggable Genome
Protein Pathways:	Metabolic pathways, Valine, leucine and isoleucine degradation

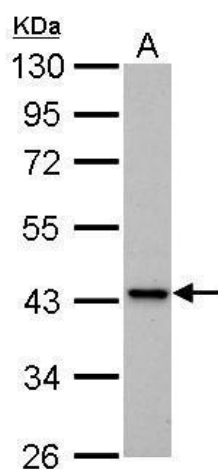


[View online »](#)

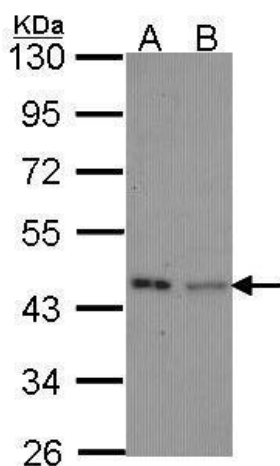
Product images:



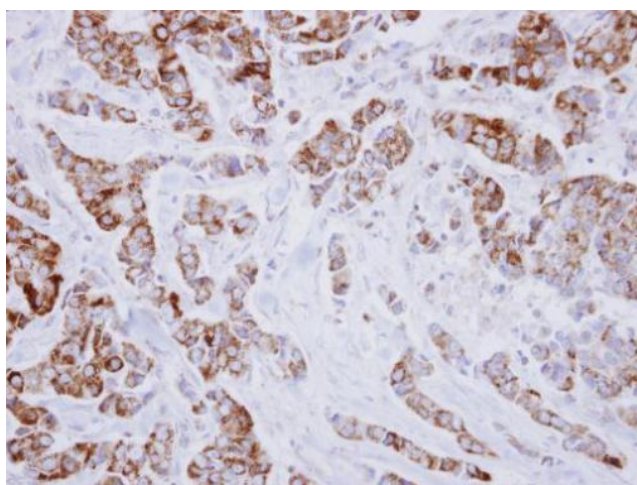
Sample (50 ug of whole cell lysate). A: Mouse brain. 10% SDS PAGE. TA308023 diluted at 1:1000.



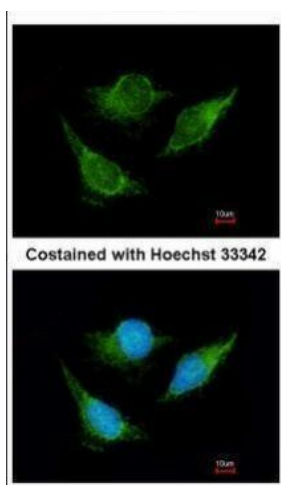
IVD antibody detects IVD protein by Western blot analysis. A. 30 ug PC-12 whole cell lysate/extract. 10 % SDS-PAGE. IVD antibody (TA308023) dilution: 1:1000



Sample (30 ug of whole cell lysate). A: HeLa. B: JurKat. 10% SDS PAGE. TA308023 diluted at 1:1000.



Immunohistochemical analysis of paraffin-embedded Breast ca, using IVD (TA308023) antibody at 1:250 dilution.



Immunofluorescence analysis of methanol-fixed HeLa, using IVD (TA308023) antibody at 1:200 dilution.