

## Product datasheet for **TA308022**

### RO60 Rabbit Polyclonal Antibody

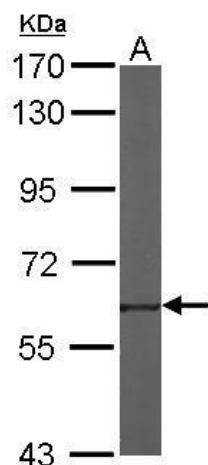
#### Product data:

Product Type:	Primary Antibodies
Applications:	IHC, WB
Recommended Dilution:	IHC:1:100-1:1000; WB:1:500-1:3000
Reactivity:	Human, Mouse (Predicted: Rat, Bovine)
Host:	Rabbit
Isotype:	IgG
Clonality:	Polyclonal
Immunogen:	Recombinant fragment corresponding to a region within amino acids 178 and 459 of TROVE2 (Uniprot ID#P10155)
Formulation:	0.1M Tris, 0.1M Glycine, 10% Glycerol (pH7). 0.01% Thimerosal was added as a preservative.
Concentration:	lot specific
Purification:	Purified by antigen-affinity chromatography.
Conjugation:	Unconjugated
Storage:	Store at -20°C as received.
Stability:	Stable for 12 months from date of receipt.
Predicted Protein Size:	61 kDa
Gene Name:	TROVE domain family member 2
Database Link:	<a href="#">NP_004591</a> <a href="#">Entrez Gene 20822 Mouse</a> <a href="#">Entrez Gene 304833 Rat</a> <a href="#">Entrez Gene 6738 Human</a> <a href="#">P10155</a>
Synonyms:	RO60; RORN; SSA2
Note:	Seq homology of immunogen across species: Rat (88%), Bovine (95%)
Protein Families:	Transcription Factors
Protein Pathways:	Systemic lupus erythematosus

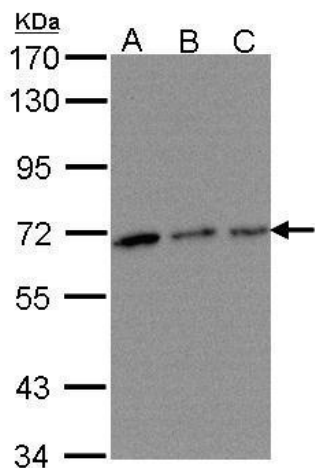


[View online »](#)

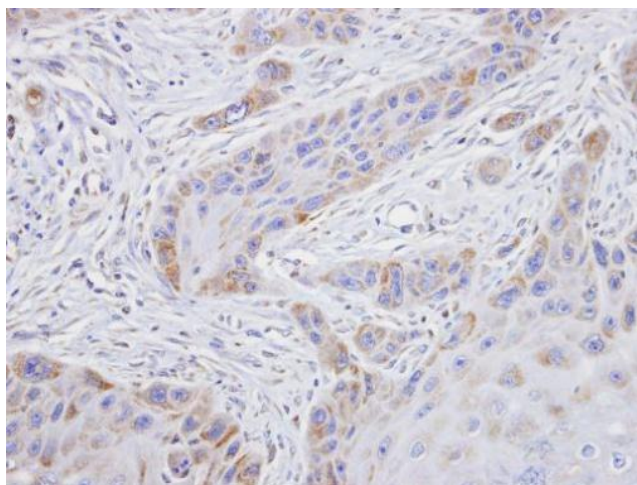
Product images:



Sample (50 ug of whole cell lysate). A: mouse heart. 7.5% SDS PAGE. TA308022 diluted at 1:1000.



Sample (30 ug of whole cell lysate). A:293T. B:A431. C:H1299. 7.5% SDS PAGE. TA308022 diluted at 1:500



Immunohistochemical analysis of paraffin-embedded SCC15 xenograft, using TROVE2 (TA308022) antibody at 1:100 dilution.