

## Product datasheet for **TA308021**

### **NXF1 Rabbit Polyclonal Antibody**

#### **Product data:**

Product Type:	Primary Antibodies
Applications:	IF, WB
Recommended Dilution:	ICC/IF:1:100-1:1000; WB:1:500-1:3000
Reactivity:	Human, Mouse (Predicted: Pig, Rat, Bovine)
Host:	Rabbit
Isotype:	IgG
Clonality:	Polyclonal
Immunogen:	Recombinant fragment corresponding to a region within amino acids 449 and 619 of TAP (Uniprot ID#Q9UBU9)
Formulation:	1XPBS, 20% Glycerol (pH7). 0.01% Thimerosal was added as a preservative.
Concentration:	lot specific
Purification:	Affinity purified by Protein A.
Conjugation:	Unconjugated
Storage:	Store at -20°C as received.
Stability:	Stable for 12 months from date of receipt.
Predicted Protein Size:	70 kDa
Gene Name:	nuclear RNA export factor 1
Database Link:	<a href="#">NP_001074960</a> <a href="#">Entrez Gene 53319 Mouse</a> <a href="#">Entrez Gene 59087 Rat</a> <a href="#">Entrez Gene 10482 Human</a> <a href="#">Q9UBU9</a>



[View online »](#)

**Background:**

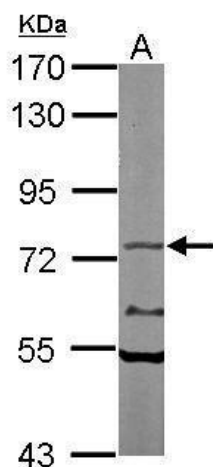
This gene is one member of a family of nuclear RNA export factor genes. Common domain features of this family are a noncanonical RNP-type RNA-binding domain (RBD), 4 leucine-rich repeats (LRRs), a nuclear transport factor 2 (NTF2)-like domain that allows heterodimerization with NTF2-related export protein-1 (NXT1), and a ubiquitin-associated domain that mediates interactions with nucleoporins. The LRRs and NTF2-like domains are required for export activity. Alternative splicing seems to be a common mechanism in this gene family. The encoded protein of this gene shuttles between the nucleus and the cytoplasm and binds in vivo to poly(A)<sup>+</sup> RNA. It is the vertebrate homologue of the yeast protein Mex67p. The encoded protein overcomes the mRNA export block caused by the presence of saturating amounts of CTE (constitutive transport element) RNA of type D retroviruses. Alternative splicing results in multiple transcript variants. [provided by RefSeq]

**Synonyms:**

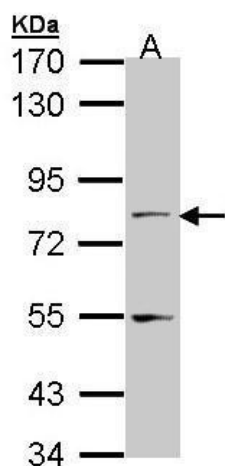
MEX67; TAP

**Note:**

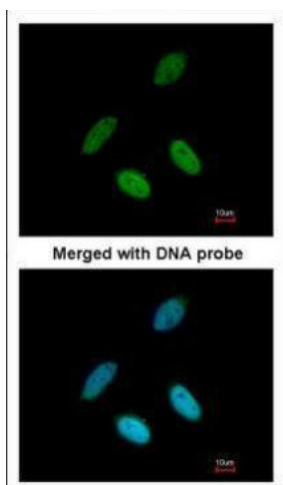
Seq homology of immunogen across species: Pig (96%), Rat (97%), Bovine (97%)

**Product images:**

Sample (50 ug of whole cell lysate). A: Mouse brain. 7.5% SDS PAGE. TA308021 diluted at 1:1000.



Sample (30 ug of whole cell lysate). A: A431. 7.5% SDS PAGE. TA308021 diluted at 1:1000.



Immunofluorescence analysis of paraformaldehyde-fixed HeLa, using TAP (TA308021) antibody at 1:200 dilution.