

Product datasheet for **TA308018**

RPL13A Rabbit Polyclonal Antibody

Product data:

Product Type:	Primary Antibodies
Applications:	IF, IHC, WB
Recommended Dilution:	ICC/IF:1:100-1:1000; IHC:1:100-1:1000; WB:1:500-1:3000
Reactivity:	Human (Predicted: Mouse, Monkey, Pig, Rat, Xenopus, Zebrafish, Bovine, X. tropicalis)
Host:	Rabbit
Isotype:	IgG
Clonality:	Polyclonal
Immunogen:	Recombinant fragment corresponding to a region within amino acids 1 and 203 of RPL13A (Uniprot ID#P40429)
Formulation:	0.1M Tris, 0.1M Glycine, 10% Glycerol (pH7). 0.01% Thimerosal was added as a preservative.
Concentration:	lot specific
Purification:	Purified by antigen-affinity chromatography.
Conjugation:	Unconjugated
Storage:	Store at -20°C as received.
Stability:	Stable for 12 months from date of receipt.
Predicted Protein Size:	24 kDa
Gene Name:	ribosomal protein L13a
Database Link:	NP_036555 Entrez Gene 22121 Mouse Entrez Gene 317646 Rat Entrez Gene 574314 Monkey Entrez Gene 23521 Human P40429



[View online »](#)

Background:

Ribosomes, the organelles that catalyze protein synthesis, consist of a small 40S subunit and a large 60S subunit. Together these subunits are composed of 4 RNA species and approximately 80 structurally distinct proteins. This gene encodes a ribosomal protein that is a component of the 60S subunit. The protein belongs to the L13P family of ribosomal proteins. It is located in the cytoplasm. Transcript variants utilizing alternative polyA signals have been observed. This gene is co-transcribed with the small nucleolar RNA genes U32, U33, U34, and U35, which are located in its second, fourth, fifth, and sixth introns, respectively. As is typical for genes encoding ribosomal proteins, there are multiple processed pseudogenes of this gene dispersed through the genome. [provided by RefSeq]

Synonyms:

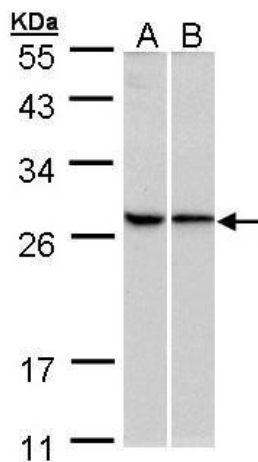
L13A; TSTA1

Note:

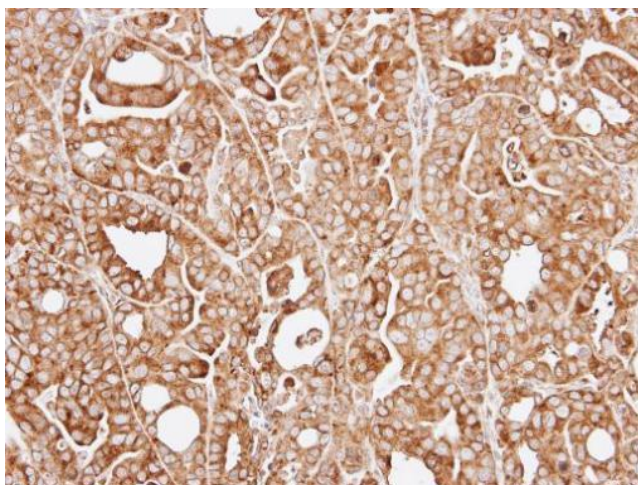
Seq homology of immunogen across species: Mouse (95%), Monkey (99%), Pig (98%), Rat (96%), *Xenopus laevis* (91%), Zebrafish (89%), Bovine (97%), *Xenopus tropicalis* (91%)

Protein Pathways:

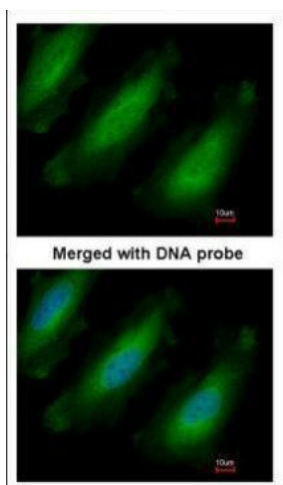
Ribosome

Product images:

Sample (30 ug of whole cell lysate). A:293T.
B:HeLa. 10% SDS PAGE. TA308018 diluted at 1:500



Immunohistochemical analysis of paraffin-embedded NCI-N87 xenograft, using RPL13A (TA308018) antibody at 1:100 dilution.



Immunofluorescence analysis of paraformaldehyde-fixed HeLa, using RPL13A (TA308018) antibody at 1:200 dilution.