

Product datasheet for **TA308016**

PHEX Rabbit Polyclonal Antibody

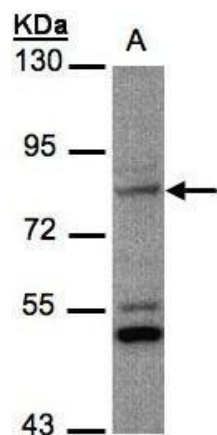
Product data:

Product Type:	Primary Antibodies
Applications:	WB
Recommended Dilution:	WB:1:500-1:3000
Reactivity:	Human (Predicted: Mouse, Rat, Bovine)
Host:	Rabbit
Isotype:	IgG
Clonality:	Polyclonal
Immunogen:	Recombinant fragment corresponding to a region within amino acids 1 and 355 of PHEX (Uniprot ID#P78562)
Formulation:	0.1M Tris, 0.1M Glycine, 10% Glycerol (pH7). 0.01% Thimerosal was added as a preservative.
Purification:	Purified by antigen-affinity chromatography.
Conjugation:	Unconjugated
Storage:	Store at -20°C as received.
Stability:	Stable for 12 months from date of receipt.
Predicted Protein Size:	86 kDa
Gene Name:	phosphate regulating endopeptidase homolog, X-linked
Database Link:	NP_000435 Entrez Gene 18675 Mouse Entrez Gene 25512 Rat Entrez Gene 5251 Human P78562
Background:	The protein encoded by this gene is a transmembrane endopeptidase that belongs to the type II integral membrane zinc-dependent endopeptidase family. The protein is thought to be involved in bone and dentin mineralization and renal phosphate reabsorption. Mutations in this gene cause X-linked hypophosphatemic rickets. [provided by RefSeq]
Synonyms:	HPDR; HPDR1; HYP; HYP1; LXHR; PEX; XLH
Note:	Seq homology of immunogen across species: Mouse (96%), Rat (96%), Bovine (95%)
Protein Families:	Druggable Genome, Protease, Transmembrane



[View online »](#)

Product images:



Sample (30 ug whole cell lysate). A: MOLT4. 7.5% SDS PAGE. TA308016 diluted at 1:1000