

## Product datasheet for **TA308015**

### RPS4X Rabbit Polyclonal Antibody

#### Product data:

Product Type:	Primary Antibodies
Applications:	WB
Recommended Dilution:	WB:1:500-1:3000
Reactivity:	Human (Predicted: Mouse, Rat, Dog, Bovine)
Host:	Rabbit
Isotype:	IgG
Clonality:	Polyclonal
Immunogen:	Recombinant fragment contain a sequence corresponding to a region within amino acids 60 and 243 of RPS4X (Uniprot ID#P62701)
Formulation:	0.1M Tris, 0.1M Glycine, 10% Glycerol (pH7). 0.01% Thimerosal was added as a preservative.
Concentration:	lot specific
Purification:	Purified by antigen-affinity chromatography.
Conjugation:	Unconjugated
Storage:	Store at -20°C as received.
Stability:	Stable for 12 months from date of receipt.
Predicted Protein Size:	30 kDa
Gene Name:	ribosomal protein S4, X-linked
Database Link:	<a href="#">NP_000998</a> <a href="#">Entrez Gene 20102</a> <a href="#">MouseEntrez Gene 100362640</a> <a href="#">RatEntrez Gene 403893</a> <a href="#">DogEntrez Gene 6191</a> <a href="#">Human P62701</a>



[View online »](#)

**Background:**

Cytoplasmic ribosomes, organelles that catalyze protein synthesis, consist of a small 40S subunit and a large 60S subunit. Together these subunits are composed of 4 RNA species and approximately 80 structurally distinct proteins. This gene encodes ribosomal protein S4, a component of the 40S subunit. Ribosomal protein S4 is the only ribosomal protein known to be encoded by more than one gene, namely this gene and ribosomal protein S4, Y-linked (RPS4Y). The 2 isoforms encoded by these genes are not identical, but are functionally equivalent. Ribosomal protein S4 belongs to the S4E family of ribosomal proteins. This gene is not subject to X-inactivation. It has been suggested that haploinsufficiency of the ribosomal protein S4 genes plays a role in Turner syndrome; however, this hypothesis is controversial. As is typical for genes encoding ribosomal proteins, there are multiple processed pseudogenes of this gene dispersed through the genome. [provided by RefSeq]

**Synonyms:**

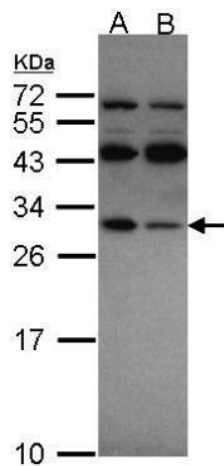
CCG2; DXS306; RPS4; S4; SCAR; SCR10

**Note:**

Seq homology of immunogen across species: Mouse (100%), Rat (100%), Dog (100%), Bovine (100%)

**Protein Pathways:**

Ribosome

**Product images:**

Sample (30 ug of whole cell lysate). A: A431. B: H1299. 12% SDS PAGE. TA308015 diluted at 1:1000.