

Product datasheet for **TA308014**

NPEPPS Rabbit Polyclonal Antibody

Product data:

Product Type:	Primary Antibodies
Applications:	IF, WB
Recommended Dilution:	ICC/IF:1:100-1:1000; WB:1:500-1:3000
Reactivity:	Human, Mouse (Predicted: Rat, Bovine, X. tropicalis)
Host:	Rabbit
Isotype:	IgG
Clonality:	Polyclonal
Immunogen:	Recombinant fragment corresponding to a region within amino acids 328 and 648 of NPEPPS (Uniprot ID#P55786)
Formulation:	1XPBS, 20% Glycerol (pH7). 0.025% ProClin 300 was added as a preservative.
Concentration:	lot specific
Purification:	Purified by antigen-affinity chromatography.
Conjugation:	Unconjugated
Storage:	Store at -20°C as received.
Stability:	Stable for 12 months from date of receipt.
Predicted Protein Size:	99 kDa
Gene Name:	aminopeptidase puromycin sensitive
Database Link:	NP_006301 Entrez Gene 19155 Mouse Entrez Gene 50558 Rat Entrez Gene 9520 Human P55786
Background:	This gene encodes the puromycin-sensitive aminopeptidase, a zinc metallopeptidase which hydrolyzes amino acids from the N-terminus of its substrate. The protein has been localized to both the cytoplasm and to cellular membranes. This enzyme degrades enkaphalins in the brain, and studies in mouse suggest that it is involved in proteolytic events regulating the cell cycle. [provided by RefSeq]
Synonyms:	AAP-S; MP100; PSA

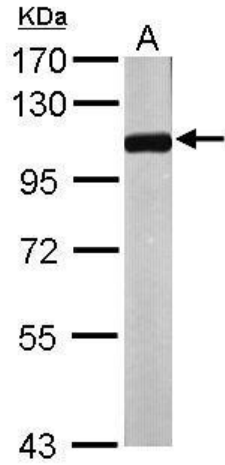


[View online »](#)

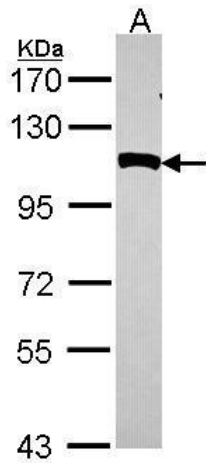
Note: Seq homology of immunogen across species: Rat (97%), Bovine (96%), Xenopus tropicalis (85%)

Protein Families: Druggable Genome, Protease

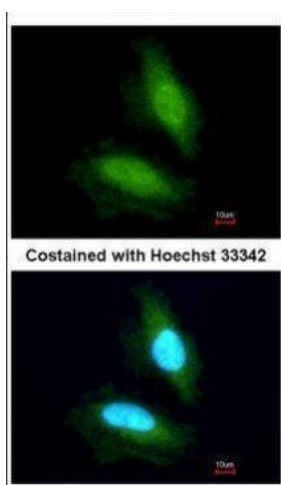
Product images:



Sample (50 ug of whole cell lysate). A: Mouse brain. 7.5% SDS PAGE. TA308014 diluted at 1:1000.



Sample (30 ug of whole cell lysate). A: HeLa. 7.5% SDS PAGE. TA308014 diluted at 1:1000.



Immunofluorescence analysis of paraformaldehyde-fixed HeLa, using NPEPPS (TA308014) antibody at 1:200 dilution.