

## Product datasheet for **TA308012**

### SIRPG Rabbit Polyclonal Antibody

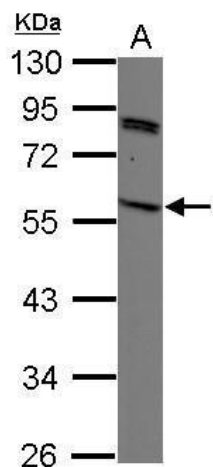
#### Product data:

Product Type:	Primary Antibodies
Applications:	WB
Recommended Dilution:	WB:1:500-1:3000
Reactivity:	Human
Host:	Rabbit
Isotype:	IgG
Clonality:	Polyclonal
Immunogen:	Recombinant fragment contain a sequence corresponding to a region within amino acids 1 and 298 of CD172 gamma (Uniprot ID#Q9P1W8)
Formulation:	0.1M Tris, 0.1M Glycine, 10% Glycerol (pH7). 0.01% Thimerosal was added as a preservative.
Concentration:	lot specific
Purification:	Purified by antigen-affinity chromatography.
Conjugation:	Unconjugated
Storage:	Store at -20°C as received.
Stability:	Stable for 12 months from date of receipt.
Predicted Protein Size:	43 kDa
Gene Name:	signal regulatory protein gamma
Database Link:	<a href="#">NP_543006</a> <a href="#">Entrez Gene 55423 Human</a> <a href="#">Q9P1W8</a>
Background:	The protein encoded by this gene is a member of the signal-regulatory protein (SIRP) family, and also belongs to the immunoglobulin superfamily. SIRP family members are receptor-type transmembrane glycoproteins known to be involved in the negative regulation of receptor tyrosine kinase-coupled signaling processes. Alternatively spliced transcript variants encoding different isoforms have been described. [provided by RefSeq]
Synonyms:	bA77C3.1; CD172g; SIRP-B2; SIRPB2; SIRPgamma
Protein Families:	Druggable Genome, Transmembrane



[View online »](#)

## Product images:



Sample (30 ug of whole cell lysate). A: K562. 10% SDS PAGE. TA308012 diluted at 1:1000.