

Product datasheet for **TA308011**

GCM2 Rabbit Polyclonal Antibody

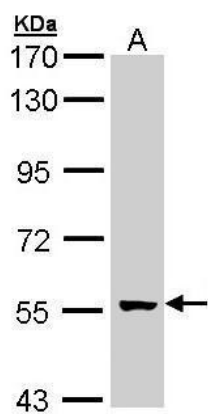
Product data:

Product Type:	Primary Antibodies
Applications:	WB
Recommended Dilution:	WB:1:500-1:3000
Reactivity:	Human
Host:	Rabbit
Isotype:	IgG
Clonality:	Polyclonal
Immunogen:	Recombinant fragment corresponding to a region within amino acids 236 and 506 of GCM2 (Uniprot ID#O75603)
Formulation:	0.1M Tris, 0.1M Glycine, 10% Glycerol (pH7). 0.01% Thimerosal was added as a preservative.
Concentration:	lot specific
Purification:	Purified by antigen-affinity chromatography.
Conjugation:	Unconjugated
Storage:	Store at -20°C as received.
Stability:	Stable for 12 months from date of receipt.
Predicted Protein Size:	57 kDa
Gene Name:	glial cells missing homolog 2
Database Link:	NP_004743 Entrez Gene 9247 Human O75603
Background:	This gene is a homolog of the Drosophila glial cells missing gene, which is thought to act as a binary switch between neuronal and glial cell determination. The protein encoded by this gene contains a conserved N-terminal GCM motif that has DNA-binding activity. The protein is a transcription factor that acts as a master regulator of parathyroid development. It has been suggested that this transcription factor might mediate the effect of calcium on parathyroid hormone expression and secretion in parathyroid cells. Mutations in this gene are associated with hypoparathyroidism. [provided by RefSeq]
Synonyms:	GCMB; hGCMB



[View online »](#)

Product images:



Sample (30 ug of whole cell lysate). A: A431. 7.5% SDS PAGE. TA308011 diluted at 1:1000.