

Product datasheet for **TA308010**

coproporphyrinogen oxidase (CPOX) Rabbit Polyclonal Antibody

Product data:

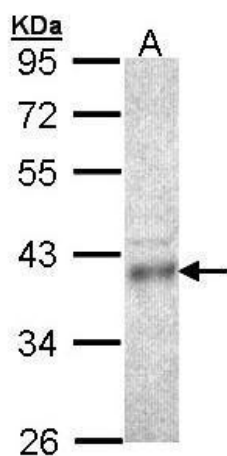
Product Type:	Primary Antibodies
Applications:	WB
Recommended Dilution:	WB:1:500-1:3000
Reactivity:	Human (Predicted: Mouse, Rat, Bovine)
Host:	Rabbit
Isotype:	IgG
Clonality:	Polyclonal
Immunogen:	Recombinant fragment corresponding to a region within amino acids 139 and 423 of CPOX (Uniprot ID#P36551)
Formulation:	0.1M Tris, 0.1M Glycine, 10% Glycerol (pH7). 0.01% Thimerosal was added as a preservative.
Concentration:	lot specific
Purification:	Purified by antigen-affinity chromatography.
Conjugation:	Unconjugated
Storage:	Store at -20°C as received.
Stability:	Stable for 12 months from date of receipt.
Predicted Protein Size:	50 kDa
Gene Name:	coproporphyrinogen oxidase
Database Link:	NP_000088 Entrez Gene 12892 Mouse Entrez Gene 304024 Rat Entrez Gene 1371 Human P36551
Background:	Coproporphyrinogen oxidase (EC 1.3.3.3) is the sixth enzyme of the heme biosynthetic pathway. This soluble protein is localized in the intermembrane space of mitochondria and catalyzes the conversion of 2 propionate groups at positions 2 and 4 of coproporphyrinogen III to 2 vinyl groups of protoporphyrinogen IX. [supplied by OMIM]
Synonyms:	CPO; CPX; HCP
Note:	Seq homology of immunogen across species: Mouse (89%), Rat (88%), Bovine (94%)
Protein Families:	Druggable Genome



[View online »](#)

Protein Pathways: Metabolic pathways, Porphyrin and chlorophyll metabolism

Product images:



Sample (30 ug of whole cell lysate). A: HCT116
10% SDS PAGE. TA308010 diluted at 1:1000.