

## Product datasheet for **TA308008**

### RCBTB2 Rabbit Polyclonal Antibody

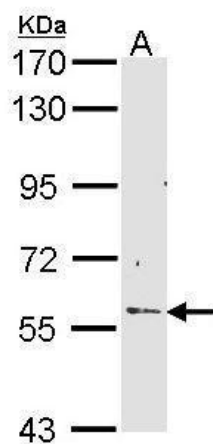
#### Product data:

Product Type:	Primary Antibodies
Applications:	WB
Recommended Dilution:	WB:1:500-1:3000
Reactivity:	Human (Predicted: Mouse, Rat, Xenopus, Bovine, X. tropicalis)
Host:	Rabbit
Isotype:	IgG
Clonality:	Polyclonal
Immunogen:	Recombinant fragment corresponding to a region within amino acids 214 and 472 of RCBTB2 (Uniprot ID#O95199)
Formulation:	0.1M Tris, 0.1M Glycine, 10% Glycerol (pH7). 0.01% Thimerosal was added as a preservative.
Concentration:	lot specific
Purification:	Purified by antigen-affinity chromatography.
Conjugation:	Unconjugated
Storage:	Store at -20°C as received.
Stability:	Stable for 12 months from date of receipt.
Predicted Protein Size:	60 kDa
Gene Name:	RCC1 and BTB domain containing protein 2
Database Link:	<a href="#">NP_001259</a> <a href="#">Entrez Gene 105670</a> <a href="#">MouseEntrez Gene 290363</a> <a href="#">RatEntrez Gene 1102</a> <a href="#">Human O95199</a>
Background:	This gene encodes a member of the RCC1-related GEF family. The N-terminal half of the encoded amino acid sequence shows similarity to the regulator of chromosome condensation RCC1, which acts as a guanine nucleotide exchange factor (GEF) protein for the Ras-related GTPase Ran. [provided by RefSeq]
Synonyms:	CHC1L; RLG
Note:	Seq homology of immunogen across species: Mouse (96%), Rat (96%), Xenopus laevis (83%), Bovine (96%), Xenopus tropicalis (83%)



[View online »](#)

## Product images:



Sample (30 ug of whole cell lysate). A: Hep G2.  
7.5% SDS PAGE. TA308008 diluted at 1:1000.