

Product datasheet for **TA308007**

MX1 Rabbit Polyclonal Antibody

Product data:

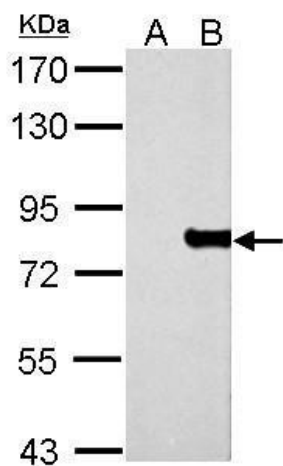
Product Type:	Primary Antibodies
Applications:	IHC, WB
Recommended Dilution:	WB:1:1000-1:10000
Reactivity:	Human
Host:	Rabbit
Isotype:	IgG
Clonality:	Polyclonal
Immunogen:	Recombinant fragment corresponding to a region within amino acids 1 and 276 of MX1 (Uniprot ID#P20591)
Formulation:	1XPBS, 1% BSA, 20% Glycerol (pH7). 0.025% ProClin 300 was added as a preservative.
Concentration:	lot specific
Purification:	Purified by antigen-affinity chromatography.
Conjugation:	Unconjugated
Storage:	Store at -20°C as received.
Stability:	Stable for 12 months from date of receipt.
Predicted Protein Size:	76 kDa
Gene Name:	MX dynamin like GTPase 1
Database Link:	NP_001138397 Entrez Gene 4599 Human P20591
Background:	In mouse, the interferon-inducible Mx protein is responsible for a specific antiviral state against influenza virus infection. The protein encoded by this gene is similar to the mouse protein as determined by its antigenic relatedness, induction conditions, physicochemical properties, and amino acid analysis. This cytoplasmic protein is a member of both the dynamin family and the family of large GTPases. Two transcript variants encoding the same protein have been found for this gene. [provided by RefSeq]
Synonyms:	IFI-78K; IFI78; MX; MxA



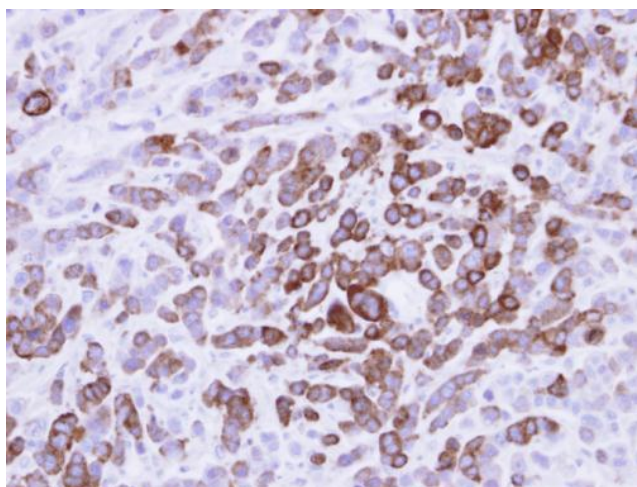
[View online »](#)

Protein Families: Druggable Genome

Product images:



detects protein by Western blot analysis. A. 30 µg 293T whole cell lysate/extract. B. 30 µg whole cell lysate/extract of human MX1-transfected 293T cells. 7.5 % SDS-PAGE. (TA308007) dilution: 1:5000



MX1 Antibody detects MX1 protein at cytosol on MDA-MB-468 xenograft by immunohistochemical analysis. Sample: Paraffin-embedded MDA-MB-468 xenograft. MX1 Antibody (TA308007) dilution: 1:500.