

## Product datasheet for **TA307999**

### Ribosomal protein S10 (RPS10) Rabbit Polyclonal Antibody

#### Product data:

Product Type:	Primary Antibodies
Applications:	IF, IHC, WB
Recommended Dilution:	ICC/IF:1:100-1:1000; IHC:1:100-1:1000; WB:1:500-1:3000
Reactivity:	Human, Mouse (Predicted: Monkey, Pig, Rat, Bovine)
Host:	Rabbit
Isotype:	IgG
Clonality:	Polyclonal
Immunogen:	Recombinant fragment contain a sequence corresponding to a region within amino acids 1 and 151 of RPS10 (Uniprot ID#P46783)
Formulation:	0.1M Tris, 0.1M Glycine, 10% Glycerol (pH7). 0.01% Thimerosal was added as a preservative.
Concentration:	lot specific
Purification:	Purified by antigen-affinity chromatography.
Conjugation:	Unconjugated
Storage:	Store at -20°C as received.
Stability:	Stable for 12 months from date of receipt.
Predicted Protein Size:	19 kDa
Gene Name:	ribosomal protein S10
Database Link:	<a href="#">NP_001005</a> <a href="#">Entrez Gene 67097 Mouse</a> <a href="#">Entrez Gene 81773 Rat</a> <a href="#">Entrez Gene 718606 Monkey</a> <a href="#">Entrez Gene 6204 Human</a> <a href="#">P46783</a>



[View online »](#)

**Background:**

Ribosomes, the organelles that catalyze protein synthesis, consist of a small 40S subunit and a large 60S subunit. Together these subunits are composed of 4 RNA species and approximately 80 structurally distinct proteins. This gene encodes a ribosomal protein that is a component of the 40S subunit. The protein belongs to the S10E family of ribosomal proteins. It is located in the cytoplasm. Variable expression of this gene in colorectal cancers compared to adjacent normal tissues has been observed, although no correlation between the level of expression and the severity of the disease has been found. As is typical for genes encoding ribosomal proteins, there are multiple processed pseudogenes of this gene dispersed through the genome. [provided by RefSeq]

**Synonyms:**

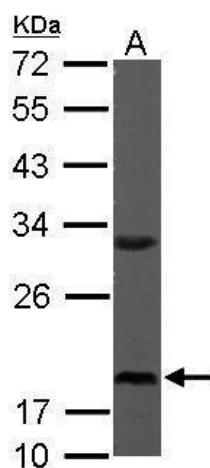
DBA9; S10

**Note:**

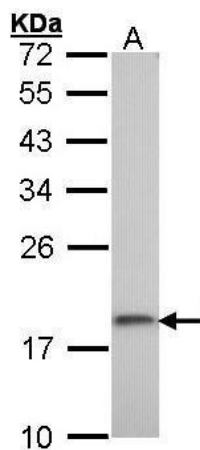
Seq homology of immunogen across species: Monkey (100%), Pig (99%), Rat (98%), Bovine (100%)

**Protein Pathways:**

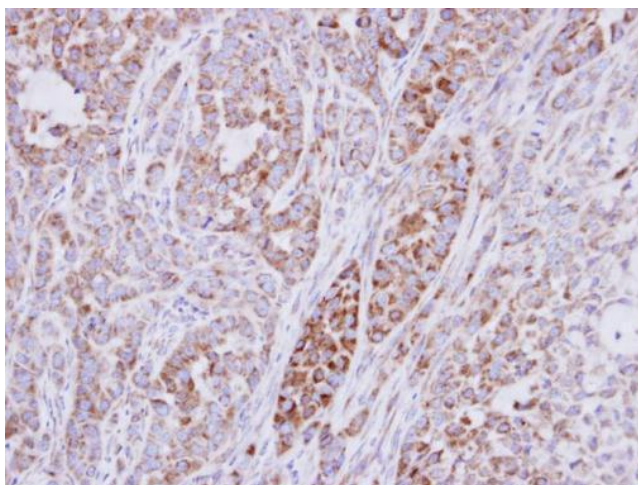
Ribosome

**Product images:**

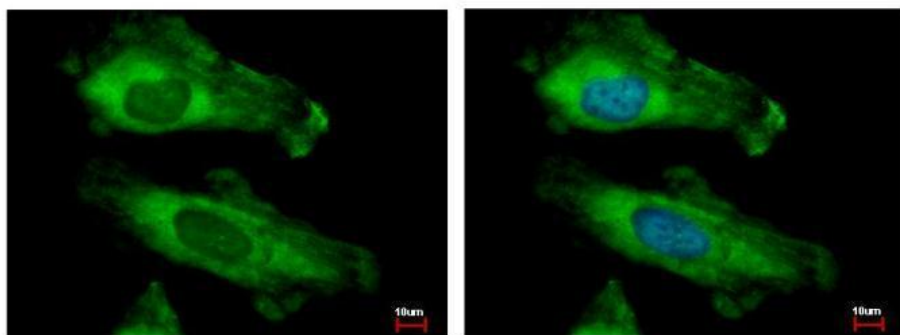
Sample (50 ug of whole cell lysate). A: Mouse brain. 12% SDS PAGE. TA307999 diluted at 1:1000.



Sample (30 ug of whole cell lysate). A: A431. 12% SDS PAGE. TA307999 diluted at 1:1000.



Immunohistochemical analysis of paraffin-embedded A549 xenograft, using RPS10 (TA307999) antibody at 1:500 dilution.



RPS10 antibody detects RPS10 protein at cytoplasm by immunofluorescent analysis. Sample: HeLa cells were fixed in 4% paraformaldehyde at RT for 15 min. Green: RPS10 protein stained by RPS10 antibody (TA307999) diluted at 1:500. Blue: Hoechst 33343 stainin