

Product datasheet for **TA307998**

MLYCD Rabbit Polyclonal Antibody

Product data:

Product Type:	Primary Antibodies
Applications:	IF, IHC, WB
Recommended Dilution:	ICC/IF:1:100-1:1000; IHC:1:100-1:1000; WB:1:500-1:3000
Reactivity:	Human
Host:	Rabbit
Isotype:	IgG
Clonality:	Polyclonal
Immunogen:	Recombinant fragment corresponding to a region within amino acids 90 and 304 of (Uniprot ID#O95822)
Formulation:	1XPBS, 20% Glycerol (pH7). 0.01% Thimerosal was added as a preservative.
Concentration:	lot specific
Purification:	Purified by antigen-affinity chromatography.
Conjugation:	Unconjugated
Storage:	Store at -20°C as received.
Stability:	Stable for 12 months from date of receipt.
Predicted Protein Size:	55 kDa
Gene Name:	malonyl-CoA decarboxylase
Database Link:	NP_036345 Entrez Gene 23417 Human O95822
Background:	The product of this gene catalyzes the breakdown of malonyl-CoA to acetyl-CoA and carbon dioxide. Malonyl-CoA is an intermediate in fatty acid biosynthesis, and also inhibits the transport of fatty acyl CoAs into mitochondria. Consequently, the encoded protein acts to increase the rate of fatty acid oxidation. It is found in mitochondria, peroxisomes, and the cytoplasm. Mutations in this gene result in malonyl-CoA decarboxylase deficiency. [provided by RefSeq]
Synonyms:	MCD

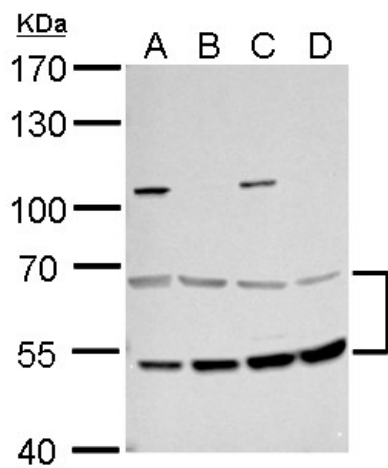


[View online »](#)

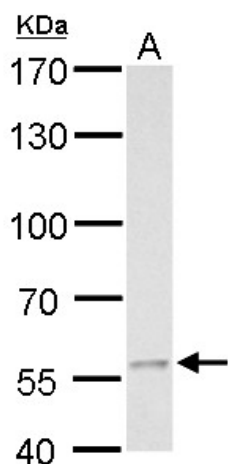
Protein Families: Druggable Genome

Protein Pathways: beta-Alanine metabolism, Metabolic pathways, Propanoate metabolism

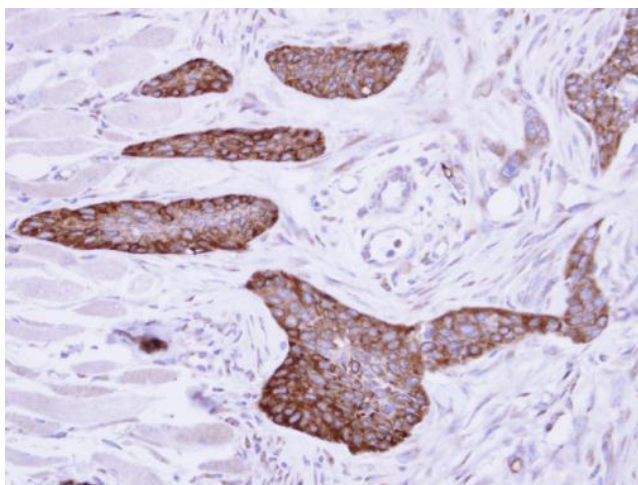
Product images:



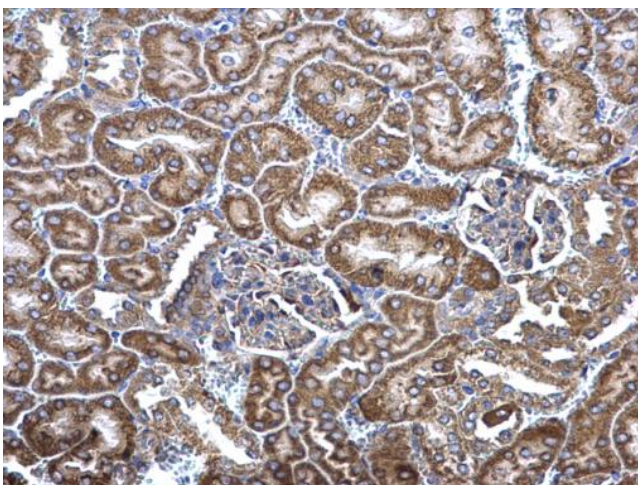
MCD antibody detects MCD protein by western blot analysis. A. 30 ug 293T whole cell lysate/extract. B. 30 ug A431 whole cell lysate/extract. C. 30 ug HeLa whole cell lysate/extract. D. 30 ug HepG2 whole cell lysate/extract. 7.5 % SDS-PAGE. MCD antibody (T



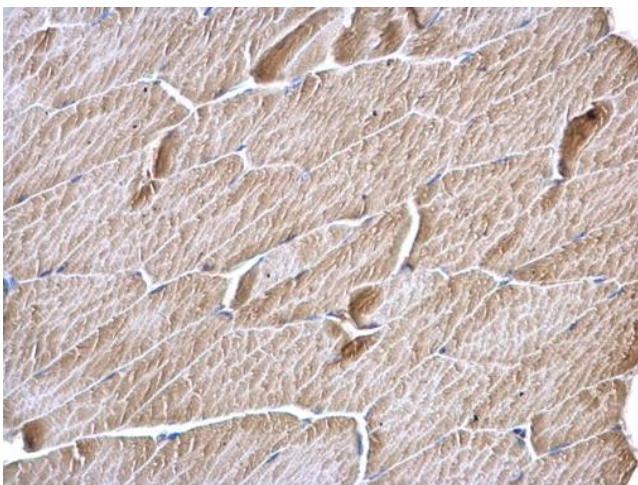
MCD antibody detects MCD protein by western blot analysis. A. 30 ug C8D30 whole cell lysate/extract. 7.5 % SDS-PAGE. MCD antibody (TA307998) dilution: 1:500



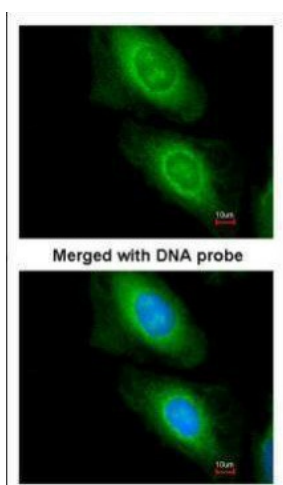
Immunohistochemical analysis of paraffin-embedded H661 xenograft, using MCD (TA307998) antibody at 1:500 dilution.



MCD antibody [N2C1], Internal detects MCD protein at cytosol on mouse kidney by immunohistochemical analysis. Sample: Paraffin-embedded mouse kidney. MCD antibody [N2C1], Internal (TA307998) dilution: 1:500.



MCD antibody [N2C1], Internal detects MCD protein at cytosol on mouse muscle by immunohistochemical analysis. Sample: Paraffin-embedded mouse muscle. MCD antibody [N2C1], Internal (TA307998) dilution: 1:500.



Immunofluorescence analysis of paraformaldehyde-fixed HeLa, using MCD (TA307998) antibody at 1:200 dilution.