

## Product datasheet for **TA307997**

### TUBB1 Rabbit Polyclonal Antibody

#### Product data:

Product Type:	Primary Antibodies
Applications:	IF, WB
Recommended Dilution:	ICC/IF:1:100-1:1000; WB:1:500-1:3000
Reactivity:	Human, Mouse (Predicted: Feline)
Host:	Rabbit
Isotype:	IgG
Clonality:	Polyclonal
Immunogen:	Recombinant fragment contain a sequence corresponding to a region within amino acids 174 and 428 of beta Tubulin (Uniprot ID#Q9H4B7)
Formulation:	0.1M Tris, 0.1M Glycine, 10% Glycerol (pH7). 0.01% Thimerosal was added as a preservative.
Concentration:	lot specific
Purification:	Purified by antigen-affinity chromatography.
Conjugation:	Unconjugated
Storage:	Store at -20°C as received.
Stability:	Stable for 12 months from date of receipt.
Predicted Protein Size:	50 kDa
Gene Name:	tubulin beta 1 class VI
Database Link:	<a href="#">NP_110400</a> <a href="#">Entrez Gene 545486 Mouse</a> <a href="#">Entrez Gene 81027 Human</a> <a href="#">Q9H4B7</a>
Background:	Microtubules are involved in a wide variety of cellular processes, including mitosis, morphogenesis, platelet formation, and mobility of cilia and flagella. Circulating platelets carry a single marginal microtubule coil that is wound in 8 to 12 turns and is responsible for platelet shape. TUBB1 is the major beta-tubulin expressed in platelets and megakaryocytes and is required for optimal platelet assembly (Wang et al., 1986 [PubMed 3782288]; Schulze et al., 2004 [PubMed 15315966]). [supplied by OMIM]
Synonyms:	beta 1; beta tubulin 1; class VI; dj543j19.4; OTTHUMP00000031411; tubulin



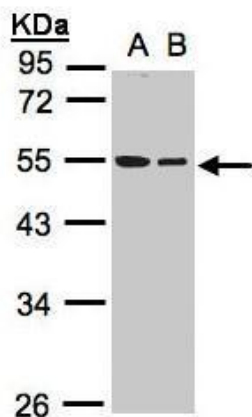
[View online »](#)

**Note:** Seq homology of immunogen across species: Cat (81%)

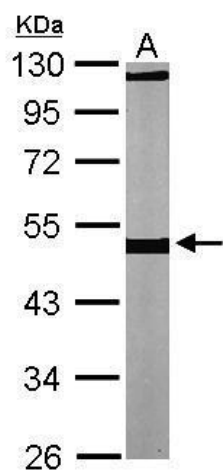
**Protein Families:** Druggable Genome

**Protein Pathways:** Gap junction, Pathogenic Escherichia coli infection

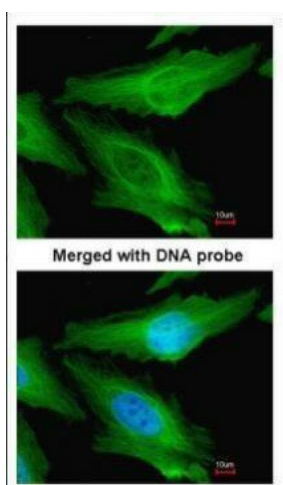
**Product images:**



Sample (30 ug whole cell lysate). A:A431. B:Hep G2. 10% SDS PAGE. TA307997 diluted at 1:1000



Sample (30 ug of whole cell lysate). A: NIH-3T3. 10% SDS PAGE. TA307997 diluted at 1:1000.



Immunofluorescence analysis of paraformaldehyde-fixed HeLa, using TUBB1 (TA307997) antibody at 1:200 dilution.