

Product datasheet for **TA307996**

FH Rabbit Polyclonal Antibody

Product data:

Product Type:	Primary Antibodies
Applications:	IF, IHC, WB
Recommended Dilution:	ICC/IF:1:100-1:1000; IHC:1:100-1:1000; WB:1:1000-1:10000
Reactivity:	Human
Host:	Rabbit
Isotype:	IgG
Clonality:	Polyclonal
Immunogen:	Recombinant fragment corresponding to a region within amino acids 195 and 473 of fumarate hydratase (Uniprot ID#P07954)
Formulation:	1XPBS, 20% Glycerol (pH7). 0.025% ProClin 300 was added as a preservative.
Concentration:	lot specific
Purification:	Purified by antigen-affinity chromatography.
Conjugation:	Unconjugated
Storage:	Store at -20°C as received.
Stability:	Stable for 12 months from date of receipt.
Predicted Protein Size:	55 kDa
Gene Name:	fumarate hydratase
Database Link:	NP_000134 Entrez Gene 2271 Human P07954
Background:	The protein encoded by this gene is an enzymatic component of the tricarboxylic acid (TCA) cycle, or Krebs cycle, and catalyzes the formation of L-malate from fumarate. It exists in both a cytosolic form and an N-terminal extended form, differing only in the translation start site used. The N-terminal extended form is targeted to the mitochondrion, where the removal of the extension generates the same form as in the cytoplasm. It is similar to some thermostable class II fumarases and functions as a homotetramer. Mutations in this gene can cause fumarase deficiency and lead to progressive encephalopathy. [provided by RefSeq]
Synonyms:	FMRD; HLRCC; LRCC; MCL; MCUL1

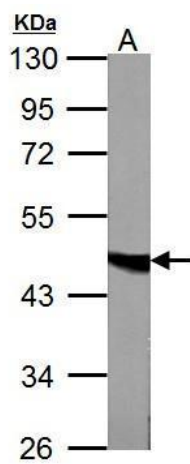


[View online »](#)

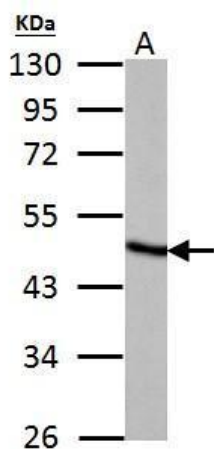
Protein Families: Druggable Genome

Protein Pathways: Citrate cycle (TCA cycle), Metabolic pathways, Pathways in cancer, Renal cell carcinoma

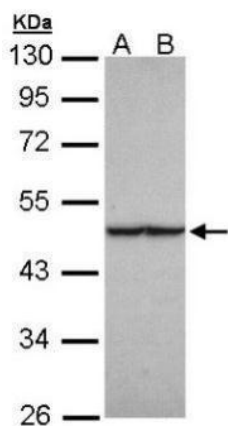
Product images:



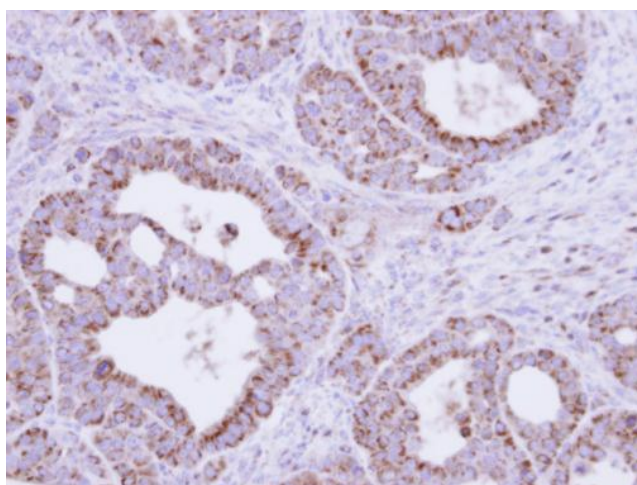
Fumarate hydratase antibody detects FH protein by Western blot analysis. A. 50 ug mouse liver lysate/extract. 7.5% SDS-PAGE. Fumarate hydratase antibody (TA307996) dilution: 1:1000.



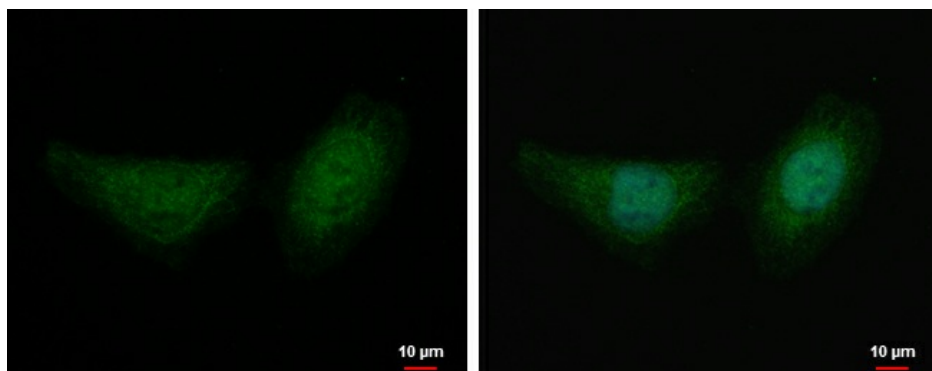
Fumarate hydratase antibody detects Fumarate hydratase protein by Western blot analysis. A. 50 ug rat liver lysate/extract. 10 % SDS-PAGE. Fumarate hydratase antibody (TA307996) dilution: 1:5000



Sample (30 ug of whole cell lysate). A: HeLa. B: Hep G2. 10% SDS PAGE. TA307996 diluted at 1:1000



Immunohistochemical analysis of paraffin-embedded NCIN87 xenograft, using fumarate hydratase (TA307996) antibody at 1:500 dilution.



Fumarate hydratase antibody detects Fumarate hydratase protein at mitochondria by immunofluorescent analysis. Sample: HeLa cells were fixed in 2% paraformaldehyde/culture medium at 37°C for 30min. Green: Fumarate hydratase protein stained by Fumarate hyd