

Product datasheet for **TA307995**

NDUFS2 Rabbit Polyclonal Antibody

Product data:

Product Type:	Primary Antibodies
Applications:	IF, IHC, WB
Recommended Dilution:	ICC/IF:1:100-1:1000; IHC:1:100-1:1000; WB:1:1000-1:10000
Reactivity:	Human, Mouse (Predicted: Chimpanzee)
Host:	Rabbit
Isotype:	IgG
Clonality:	Polyclonal
Immunogen:	Recombinant fragment corresponding to a region within amino acids 200 and 430 of NDUFS2 (Uniprot ID#O75306)
Formulation:	0.1M Tris, 0.1M Glycine, 20% Glycerol (pH7). 0.01% Thimerosal was added as a preservative.
Concentration:	lot specific
Purification:	Purified by antigen-affinity chromatography.
Conjugation:	Unconjugated
Storage:	Store at -20°C as received.
Stability:	Stable for 12 months from date of receipt.
Predicted Protein Size:	53 kDa
Gene Name:	NADH:ubiquinone oxidoreductase core subunit S2
Database Link:	NP_004541 Entrez Gene 226646 Mouse Entrez Gene 4720 Human O75306
Background:	Mitochondrial complex I (NADH-ubiquinone reductase; EC 1.6.5.3) is the first multimeric complex of the respiratory chain that catalyzes the NADH oxidation with concomitant ubiquinone reduction and proton ejection out of the mitochondria. Mammalian mitochondrial complex I is an assembly of at least 43 different subunits. Seven of the subunits are encoded by the mitochondrial genome; the remainder are the products of nuclear genes. The iron-sulfur protein (IP) fraction of complex I is made up of 7 subunits, including NDUFS2. See NDUFS1 (MIM 157655). [supplied by OMIM]
Synonyms:	CI-49

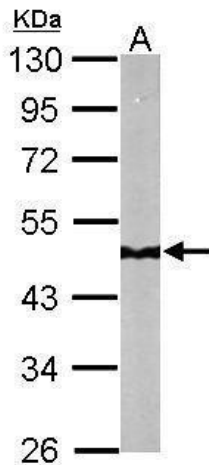


[View online »](#)

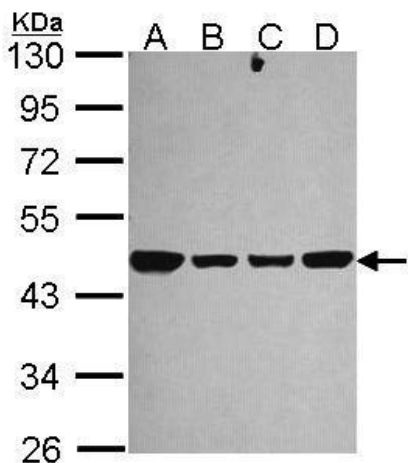
Note: Seq homology of immunogen across species: Chimpanzee (100%)

Protein Pathways: Alzheimer's disease, Huntington's disease, Metabolic pathways, Oxidative phosphorylation, Parkinson's disease

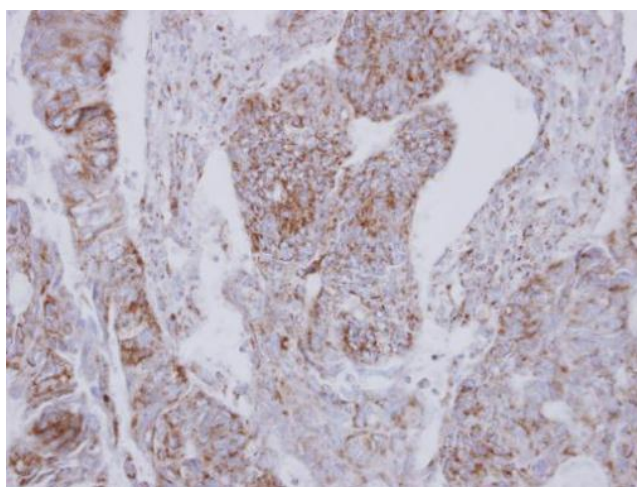
Product images:



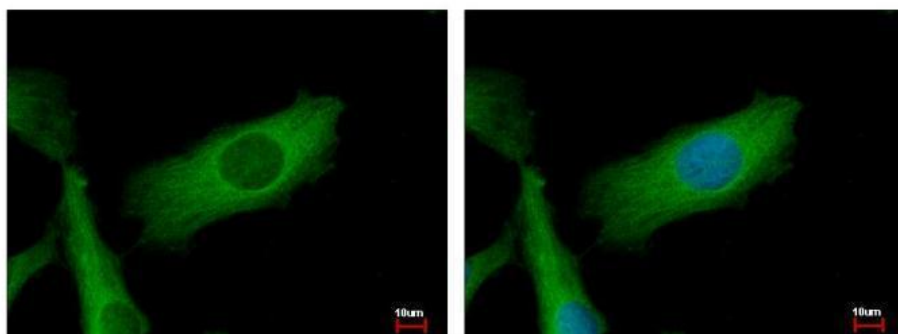
Sample (50 ug of whole cell lysate). A: Mouse brain. 10% SDS PAGE. TA307995 diluted at 1:10000.



Sample (30 ug of whole cell lysate). A: 293T. B: A431. C: JurKat. D: Raji. 10% SDS PAGE. TA307995 diluted at 1:1000.



Immunohistochemical analysis of paraffin-embedded Colon ca, using NDUFS2 (TA307995) antibody at 1:250 dilution.



NDUFS2 antibody detects NDUFS2 protein at mitochondria by immunofluorescent analysis. Sample: HeLa cells were fixed in 2% paraformaldehyde/culture medium at 37°C for 30min. Green: NDUFS2 protein stained by NDUFS2 antibody (TA307995) diluted at 1:500. Blu