

Product datasheet for **TA307994**

PGCP (CPQ) Rabbit Polyclonal Antibody

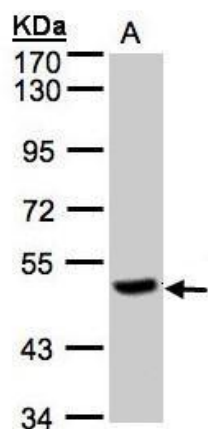
Product data:

Product Type:	Primary Antibodies
Applications:	IHC, WB
Recommended Dilution:	IHC:1:100-1:1000; WB:1:500-1:3000
Reactivity:	Human
Host:	Rabbit
Isotype:	IgG
Clonality:	Polyclonal
Immunogen:	Recombinant fragment corresponding to a region within amino acids 19 and 296 of PGCP (Uniprot ID#Q9Y646)
Formulation:	0.1M Tris, 0.1M Glycine, 10% Glycerol (pH7). 0.01% Thimerosal was added as a preservative.
Concentration:	lot specific
Purification:	Purified by antigen-affinity chromatography.
Conjugation:	Unconjugated
Storage:	Store at -20°C as received.
Stability:	Stable for 12 months from date of receipt.
Predicted Protein Size:	52 kDa
Gene Name:	carboxypeptidase Q
Database Link:	NP_057218 Entrez Gene 10404 Human Q9Y646
Synonyms:	LDP; PGCP
Protein Families:	Protease

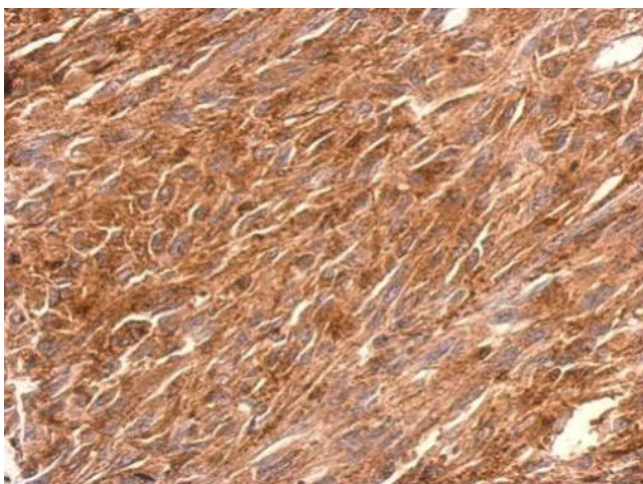


[View online »](#)

Product images:



Sample (30 ug of whole cell lysate). A:Raji. 7.5% SDS PAGE. TA307994 diluted at 1:500



PGCP antibody detects PGCP protein at cytosol on U373 xenograft by immunohistochemical analysis. Sample: Paraffin-embedded U373 xenograft. PGCP antibody (TA307994) dilution: 1:500.