

## Product datasheet for **TA307992**

### IFI30 Rabbit Polyclonal Antibody

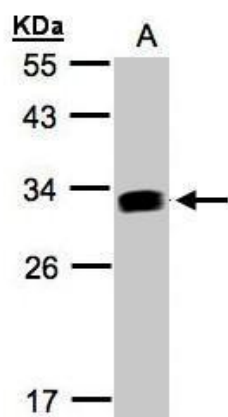
#### Product data:

Product Type:	Primary Antibodies
Applications:	IHC, WB
Recommended Dilution:	IHC:1:100-1:1000; WB:1:500-1:3000
Reactivity:	Human
Host:	Rabbit
Isotype:	IgG
Clonality:	Polyclonal
Immunogen:	Recombinant fragment corresponding to a region within amino acids 14 and 250 of GILT (Uniprot ID#P13284)
Formulation:	0.1M Tris, 0.1M Glycine, 10% Glycerol (pH7). 0.01% Thimerosal was added as a preservative.
Concentration:	lot specific
Purification:	Purified by antigen-affinity chromatography.
Conjugation:	Unconjugated
Storage:	Store at -20°C as received.
Stability:	Stable for 12 months from date of receipt.
Predicted Protein Size:	28 kDa
Gene Name:	IFI30, lysosomal thiol reductase
Database Link:	<a href="#">NP_006323</a> <a href="#">Entrez Gene 10437 Human P13284</a>
Background:	The protein encoded by this gene is a lysosomal thiol reductase that at low pH can reduce protein disulfide bonds. The enzyme is expressed constitutively in antigen-presenting cells and induced by gamma-interferon in other cell types. This enzyme has an important role in MHC class II-restricted antigen processing. [provided by RefSeq]
Synonyms:	GILT; IFI-30; IP-30; IP30
Protein Pathways:	Antigen processing and presentation

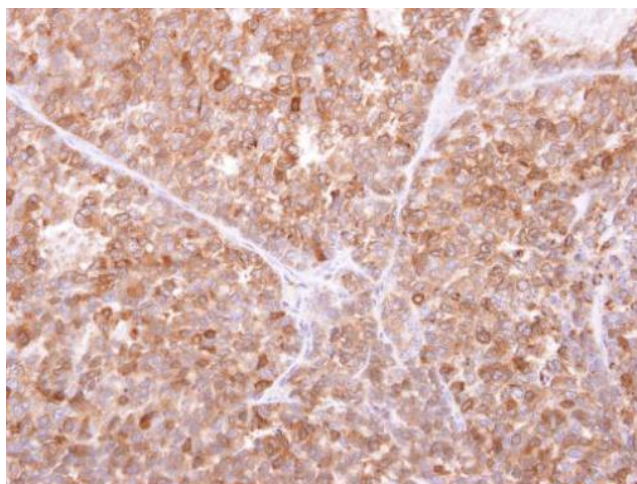


[View online »](#)

## Product images:



Sample (30 ug whole cell lysate). A:Raji. 12% SDS PAGE. TA307992 diluted at 1:1000



GILT antibody detects IFI30 protein at cytosol on AGS xenograft by immunohistochemical analysis. Sample: Paraffin-embedded AGS xenograft. GILT antibody (TA307992) dilution: 1:500.