

Product datasheet for **TA307989**

Cytokeratin 2 (KRT2) Rabbit Polyclonal Antibody

Product data:

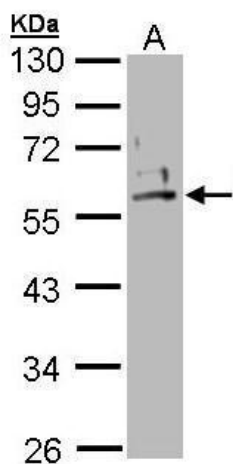
Product Type:	Primary Antibodies
Applications:	IF, IHC, WB
Recommended Dilution:	ICC/IF:1:100-1:1000; IHC:1:100-1:1000; WB:1:500-1:3000
Reactivity:	Human (Predicted: Dog)
Host:	Rabbit
Isotype:	IgG
Clonality:	Polyclonal
Immunogen:	Recombinant fragment corresponding to a region within amino acids 143 and 529 of Cytokeratin 2 (Uniprot ID#P35908)
Formulation:	0.1M Tris, 0.1M Glycine, 10% Glycerol (pH7). 0.01% Thimerosal was added as a preservative.
Concentration:	lot specific
Purification:	Purified by antigen-affinity chromatography.
Conjugation:	Unconjugated
Storage:	Store at -20°C as received.
Stability:	Stable for 12 months from date of receipt.
Predicted Protein Size:	65 kDa
Gene Name:	keratin 2
Database Link:	NP_000414 Entrez Gene 444850 Dog Entrez Gene 3849 Human P35908
Background:	The protein encoded by this gene is a member of the keratin gene family. The type II cytokeratins consist of basic or neutral proteins which are arranged in pairs of heterotypic keratin chains coexpressed during differentiation of simple and stratified epithelial tissues. This type II cytokeratin is expressed largely in the upper spinous layer of epidermal keratinocytes and mutations in this gene have been associated with bullous congenital ichthyosiform erythroderma. The type II cytokeratins are clustered in a region of chromosome 12q12-q13. [provided by RefSeq]
Synonyms:	CK-2e; K2e; KRT2A; KRT2E; KRTE



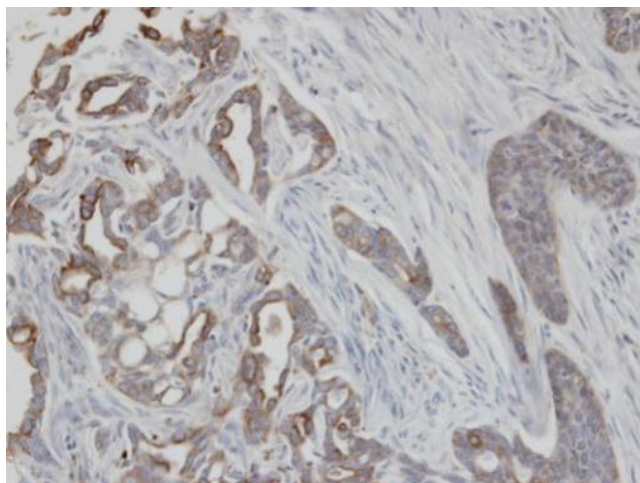
[View online »](#)

Note: Seq homology of immunogen across species: Dog (82%)

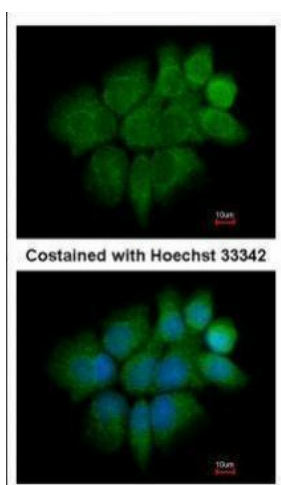
Product images:



Sample (30 ug of whole cell lysate). A: A431



Immunohistochemical analysis of paraffin-embedded H661 xenograft, using KRT2 (TA307989) antibody at 1:100 dilution.



Immunofluorescence analysis of paraformaldehyde-fixed A431, using Cytokeratin 2 (TA307989) antibody at 1:200 dilution.