

## Product datasheet for **TA307988**

### EPS8 Rabbit Polyclonal Antibody

#### Product data:

Product Type:	Primary Antibodies
Applications:	IHC, WB
Recommended Dilution:	IHC:1:100-1:1000; WB:1:500-1:3000
Reactivity:	Human (Predicted: Xenopus, Rhesus Monkey, X. tropicalis, Mouse)
Host:	Rabbit
Isotype:	IgG
Clonality:	Polyclonal
Immunogen:	Synthetic peptide corresponding to a region within amino acids 761 and 822 of EPS8 (Uniprot ID#Q12929)
Formulation:	1XPBS, 20% Glycerol (pH7). 0.01% Thimerosal was added as a preservative.
Concentration:	lot specific
Purification:	Purified by antigen-affinity chromatography.
Conjugation:	Unconjugated
Storage:	Store at -20°C as received.
Stability:	Stable for 12 months from date of receipt.
Predicted Protein Size:	92 kDa
Gene Name:	epidermal growth factor receptor pathway substrate 8
Database Link:	<a href="#">NP_004438</a> <a href="#">Entrez Gene 13860 Mouse</a> <a href="#">Entrez Gene 2059 Human</a> <a href="#">Q12929</a>
Background:	This gene encodes a member of the EPS8 family. This protein contains one PH domain and one SH3 domain. It functions as part of the EGFR pathway, though its exact role has not been determined. Highly similar proteins in other organisms are involved in the transduction of signals from Ras to Rac and growth factor-mediated actin remodeling. Alternate transcriptional splice variants of this gene have been observed but have not been thoroughly characterized. [provided by RefSeq]
Synonyms:	DFNB102

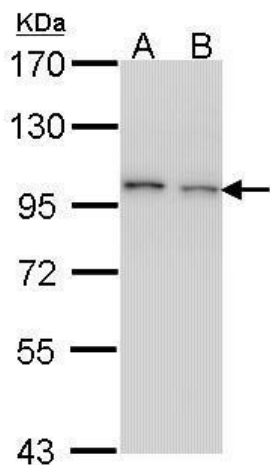


[View online »](#)

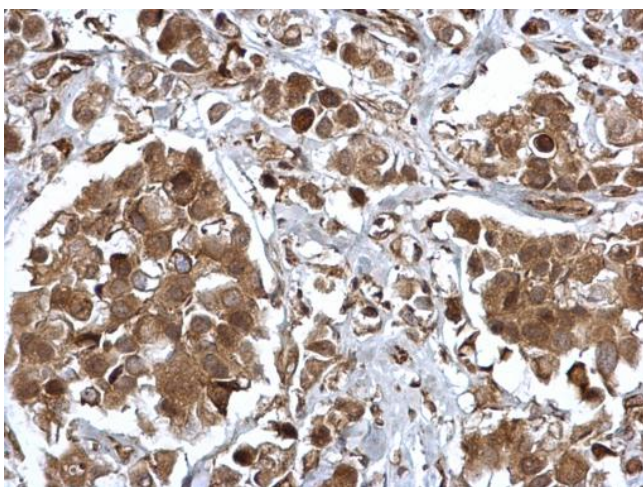
**Note:** Seq homology of immunogen across species: Mouse (100%), Xenopus laevis (92%), Xenopus Tropicalis (92%), Rhesus Monkey (100%)

**Protein Families:** Druggable Genome

**Product images:**



Sample (30 ug of whole cell lysate). A: H1299. B: HeLa. 7.5% SDS PAGE. EPS8 antibody. TA307988 diluted at 1:1000.



EPS8 antibody [C3], C-term detects EPS8 protein at cytosol and nucleus on human breast carcinoma by immunohistochemical analysis. Sample: Paraffin-embedded human breast carcinoma. EPS8 antibody [C3], C-term (TA307988) dilution: 1:500.