

Product datasheet for **TA307986**

Fibulin 2 (FBLN2) Rabbit Polyclonal Antibody

Product data:

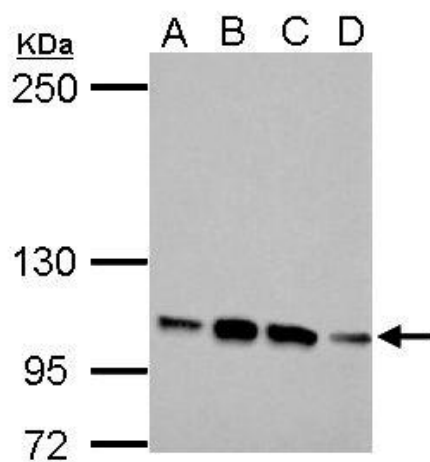
Product Type:	Primary Antibodies
Applications:	IHC, WB
Recommended Dilution:	WB:1:500-1:3000
Reactivity:	Human (Predicted: Mouse)
Host:	Rabbit
Isotype:	IgG
Clonality:	Polyclonal
Immunogen:	Recombinant fragment contain a sequence corresponding to a region within amino acids 20 and 273 of Fibulin 2 (Uniprot ID#P98095)
Formulation:	1XPBS, 20% Glycerol (pH7). 0.025% ProClin 300 was added as a preservative.
Concentration:	lot specific
Purification:	Purified by antigen-affinity chromatography.
Conjugation:	Unconjugated
Storage:	Store at -20°C as received.
Stability:	Stable for 12 months from date of receipt.
Predicted Protein Size:	132 kDa
Gene Name:	fibulin 2
Database Link:	NP_001004019 Entrez Gene 14115 Mouse Entrez Gene 2199 Human P98095
Background:	This gene encodes an extracellular matrix protein, which belongs to the fibulin family. This protein binds various extracellular ligands and calcium. It may play a role during organ development, in particular, during the differentiation of heart, skeletal and neuronal structures. Alternatively spliced transcript variants encoding different isoforms have been identified. [provided by RefSeq]
Synonyms:	fibulin 2
Note:	Seq homology of immunogen across species: Mouse (87%)



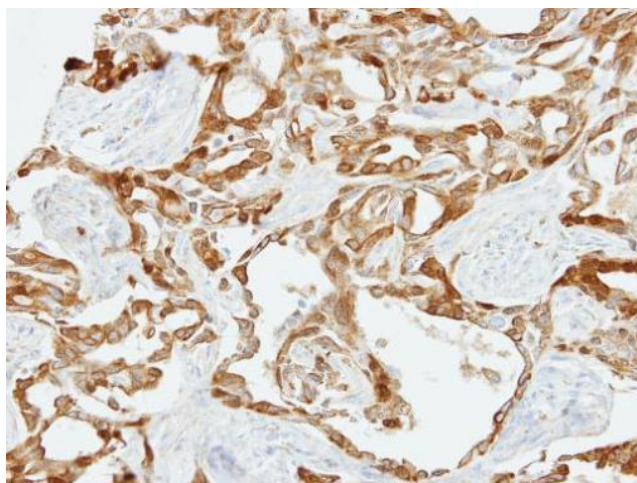
[View online »](#)

Protein Families: Secreted Protein

Product images:



Sample (30 ug of whole cell lysate). @A: 293T.



Immunohistochemical analysis of paraffin-embedded H661 xenograft, using Fibulin 2 (TA307986) antibody at 1:500 dilution.