

Product datasheet for **TA307984**

Phosphoserine Aminotransferase (PSAT1) Rabbit Polyclonal Antibody

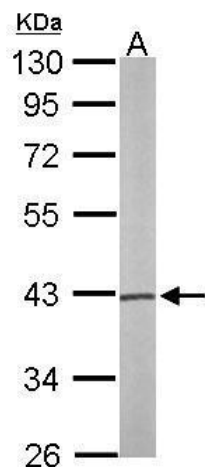
Product data:

Product Type:	Primary Antibodies
Applications:	IF, IHC, WB
Recommended Dilution:	ICC/IF:1:100-1:1000; IHC:1:100-1:1000; WB:1:500-1:3000
Reactivity:	Human, Mouse (Predicted: Rabbit, Rat, Bovine, X. tropicalis)
Host:	Rabbit
Isotype:	IgG
Clonality:	Polyclonal
Immunogen:	Recombinant fragment corresponding to a region within amino acids 48 and 328 of PSAT1 (Uniprot ID#Q9Y617)
Formulation:	1XPBS, 1% BSA, 20% Glycerol (pH7). 0.025% ProClin 300 was added as a preservative.
Concentration:	lot specific
Purification:	Purified by antigen-affinity chromatography.
Conjugation:	Unconjugated
Storage:	Store at -20°C as received.
Stability:	Stable for 12 months from date of receipt.
Predicted Protein Size:	40 kDa
Gene Name:	phosphoserine aminotransferase 1
Database Link:	NP_066977 Entrez Gene 107272 MouseEntrez Gene 293820 RatEntrez Gene 29968 Human Q9Y617
Background:	The protein encoded by this gene is likely a phosphoserine aminotransferase, based on similarity to proteins in mouse, rabbit, and Drosophila. Alternative splicing of this gene results in two transcript variants encoding different isoforms. [provided by RefSeq]
Synonyms:	EPIP; NLS2; PSA; PSAT; PSATD
Note:	Seq homology of immunogen across species: Rabbit (94%), Rat (95%), Bovine (95%), Xenopus tropicalis (82%)
Protein Pathways:	Glycine, serine and threonine metabolism, Metabolic pathways, Vitamin B6 metabolism

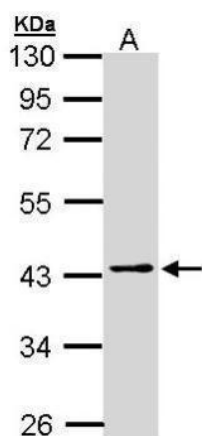


[View online »](#)

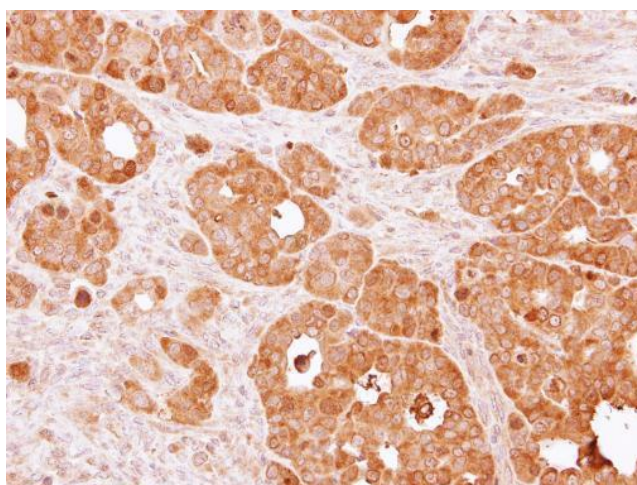
Product images:



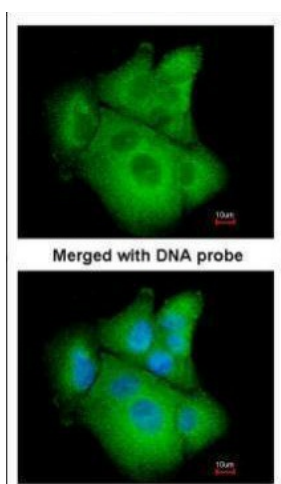
Sample (50 ug of whole cell lysate). A: Mouse brain. 10% SDS PAGE. TA307984 diluted at 1:1000.



Sample (30 ug of whole cell lysate). A: H1299. 10% SDS PAGE. TA307984 diluted at 1:1000.



Immunohistochemical analysis of paraffin-embedded NCI-N87 xenograft, using PSAT1 (TA307984) antibody at 1:500 dilution.



Immunofluorescence analysis of paraformaldehyde-fixed A549, using PSAT1 (TA307984) antibody at 1:200 dilution.