

Product datasheet for **TA307982**

NUP62 Rabbit Polyclonal Antibody

Product data:

Product Type:	Primary Antibodies
Applications:	WB
Recommended Dilution:	WB:1:500-1:3000
Reactivity:	Human
Host:	Rabbit
Isotype:	IgG
Clonality:	Polyclonal
Immunogen:	Recombinant fragment corresponding to a region within amino acids 294 and 522 of nucleoporin p62 (Uniprot ID#P37198)
Formulation:	0.1M Tris, 0.1M Glycine, 10% Glycerol (pH7). 0.01% Thimerosal was added as a preservative.
Concentration:	lot specific
Purification:	Purified by antigen-affinity chromatography.
Conjugation:	Unconjugated
Storage:	Store at -20°C as received.
Stability:	Stable for 12 months from date of receipt.
Predicted Protein Size:	53 kDa
Gene Name:	nucleoporin 62kDa
Database Link:	NP_714941 Entrez Gene 23636 Human P37198

Background: The nuclear pore complex is a massive structure that extends across the nuclear envelope, forming a gateway that regulates the flow of macromolecules between the nucleus and the cytoplasm. Nucleoporins are the main components of the nuclear pore complex in eukaryotic cells. The protein encoded by this gene is a member of the FG-repeat containing nucleoporins and is localized to the nuclear pore central plug. This protein associates with the importin alpha/beta complex which is involved in the import of proteins containing nuclear localization signals. Multiple transcript variants of this gene encode a single protein isoform. [provided by RefSeq]

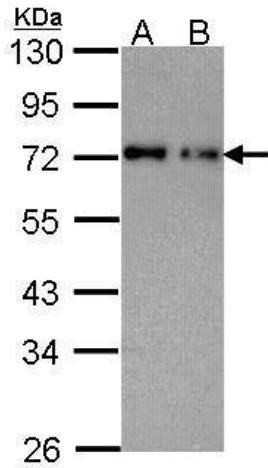


[View online »](#)

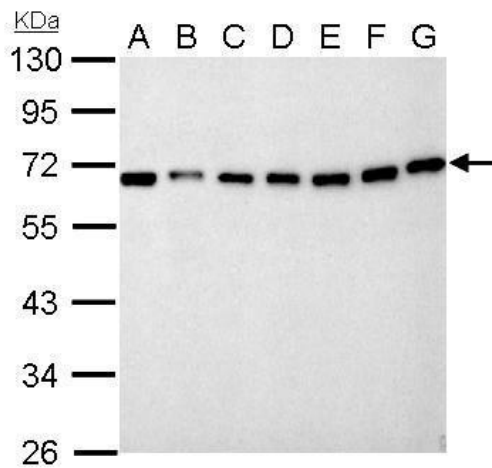
Synonyms: IBSN; p62; SNDI

Protein Families: Druggable Genome, Transcription Factors

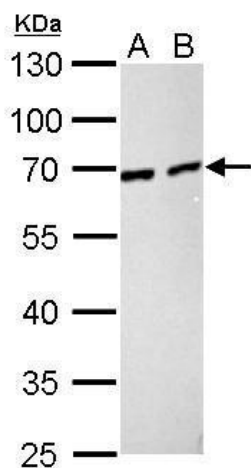
Product images:



Sample (30 ug of whole cell lysate). A: A431. B: H1299. 10% SDS PAGE. nucleoporin p62 antibody. TA307982 diluted at 1:1000.



Nucleoporin p62 antibody detects NUP62 protein by Western blot analysis. A. 30 ug Neuro2A whole lysate/extract. B. 30 ug GL261 whole cell lysate/extract. C. 30 ug C8D30 whole cell lysate/extract. D. 30 ug NIH-3T3 whole cell lysate/extract. E. 30 ug BCL-1



Nucleoporin p62 antibody detects NUP62 protein by Western blot analysis. A. 30 ug PC-12 whole cell lysate/extract. B. 30 ug Rat2 whole cell lysate/extract. 10 % SDS-PAGE. Nucleoporin p62 antibody (TA307982) dilution: 1:1000