

## Product datasheet for **TA307980**

### PEF1 Rabbit Polyclonal Antibody

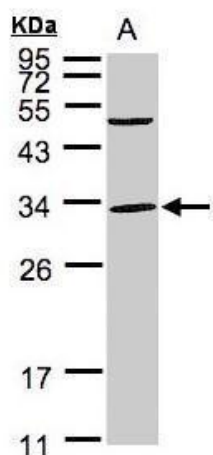
#### Product data:

Product Type:	Primary Antibodies
Applications:	IF, IHC, WB
Recommended Dilution:	ICC/IF:1:100-1:1000; IHC:1:100-1:1000; WB:1:500-1:3000
Reactivity:	Human (Predicted: Mouse, Rat, Bovine)
Host:	Rabbit
Isotype:	IgG
Clonality:	Polyclonal
Immunogen:	Recombinant fragment corresponding to a region within amino acids 77 and 284 of PEF1 (Uniprot ID#Q9UBV8)
Formulation:	0.1M Tris, 0.1M Glycine, 10% Glycerol (pH7). 0.01% Thimerosal was added as a preservative.
Concentration:	lot specific
Purification:	Purified by antigen-affinity chromatography.
Conjugation:	Unconjugated
Storage:	Store at -20°C as received.
Stability:	Stable for 12 months from date of receipt.
Predicted Protein Size:	30 kDa
Gene Name:	penta-EF-hand domain containing 1
Database Link:	<a href="#">NP_036524</a> <a href="#">Entrez Gene 67898 Mouse</a> <a href="#">Entrez Gene 297900 Rat</a> <a href="#">Entrez Gene 553115 Human</a> <a href="#">Q9UBV8</a>
Background:	PEF1 is a Ca(2+)-binding protein that belongs to the penta-EF-hand (PEF) protein family, which includes the calpain small subunit (CAPNS1; MIM 114170), sorcin (SRI; MIM 182520), grancalcin (GCA; MIM 607030), and ALG2 (PDCD6; MIM 601057) (Kitaura et al., 2001 [PubMed 11278427]). [supplied by OMIM]
Synonyms:	ABP32; PEF1A
Note:	Seq homology of immunogen across species: Mouse (92%), Rat (91%), Bovine (97%)

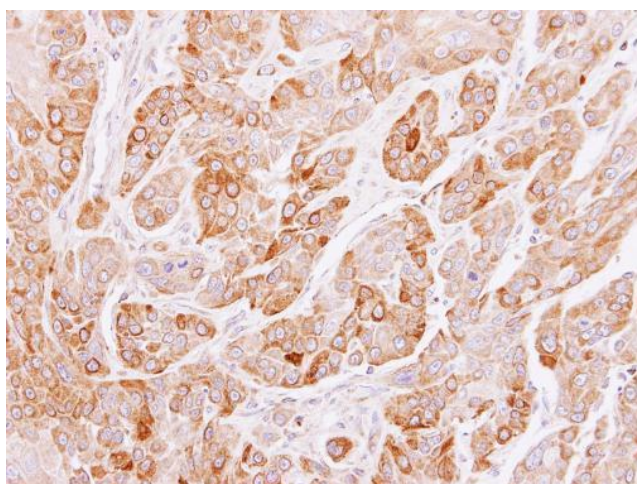


[View online »](#)

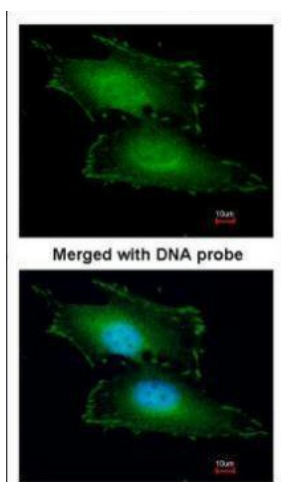
Product images:



Sample (30 ug whole cell lysate). A:293T. 12% SDS PAGE. TA307980 diluted at 1:1000



Immunohistochemical analysis of paraffin-embedded SCC4 xenograft, using PEF1 (TA307980) antibody at 1:100 dilution.



Immunofluorescence analysis of paraformaldehyde-fixed HeLa, using Peflin (TA307980) antibody at 1:200 dilution.

