

Product datasheet for **TA307979**

CLCA1 Rabbit Polyclonal Antibody

Product data:

Product Type:	Primary Antibodies
Applications:	IF, IHC, WB
Recommended Dilution:	ICC/IF:1:100-1:1000; IHC:1:100-1:1000; WB:1:500-1:3000
Reactivity:	Human
Host:	Rabbit
Isotype:	IgG
Clonality:	Polyclonal
Immunogen:	Synthetic peptide corresponding to a region within amino acids 542 and 633 of CLCA1 (Uniprot ID#A8K7I4)
Formulation:	1XPBS, 20% Glycerol (pH7). 0.01% Thimerosal was added as a preservative.
Concentration:	lot specific
Purification:	Purified by antigen-affinity chromatography.
Conjugation:	Unconjugated
Storage:	Store at -20°C as received.
Stability:	Stable for 12 months from date of receipt.
Predicted Protein Size:	100 kDa
Gene Name:	chloride channel accessory 1
Database Link:	NP_001276 Entrez Gene 1179 Human A8K7I4

Background: This gene encodes a member of the calcium sensitive chloride conductance protein family. To date, all members of this gene family map to the same region on chromosome 1p31-p22 and share a high degree of homology in size, sequence, and predicted structure, but differ significantly in their tissue distributions. The encoded protein is expressed as a precursor protein that is processed into two cell-surface-associated subunits, although the site at which the precursor is cleaved has not been precisely determined. The encoded protein may be involved in mediating calcium-activated chloride conductance in the intestine. [provided by RefSeq]



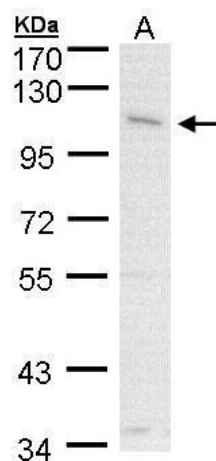
[View online »](#)

Synonyms: CACC; CaCC-1; CACC1; CLCRG1; GOB5; hCaCC-1; hCLCA1

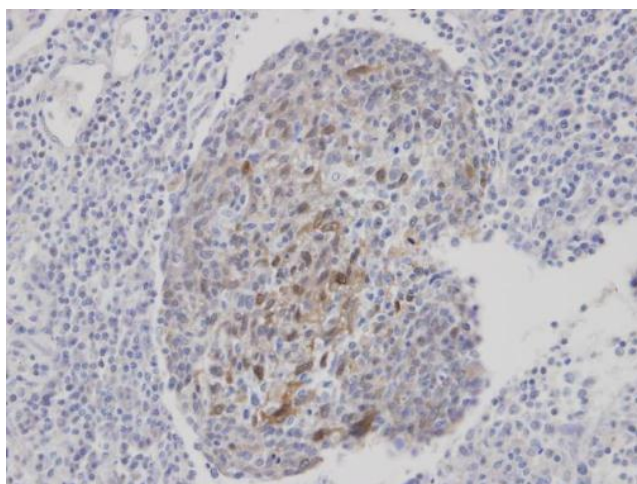
Protein Families: Druggable Genome, Ion Channels: Other

Protein Pathways: Olfactory transduction

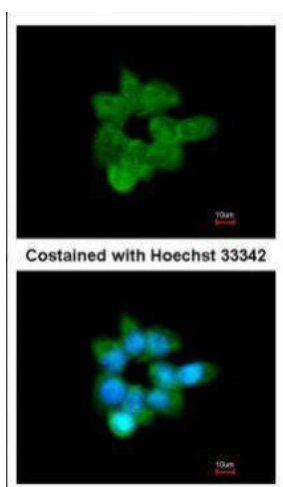
Product images:



Sample (30 ug of whole cell lysate). A: A431. 7.5% SDS PAGE. TA307979 diluted at 1:1000



Immunohistochemical analysis of paraffin-embedded gastric CA, using CLCA1 (TA307979) antibody at 1:100 dilution.



Immunofluorescence analysis of methanol-fixed A431, using CLCA1 (TA307979) antibody at 1:200 dilution.