

Product datasheet for **TA307978**

ERH Rabbit Polyclonal Antibody

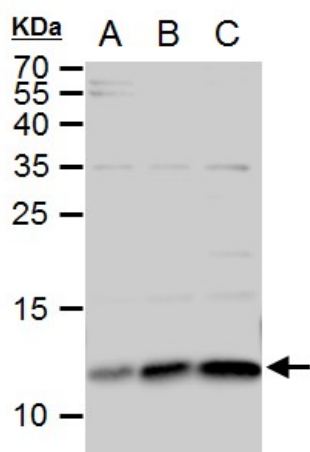
Product data:

Product Type:	Primary Antibodies
Applications:	IHC, WB
Recommended Dilution:	IHC:1:100-1:1000; WB:1:500-1:3000
Reactivity:	Human, Mouse (Predicted: Rat, Pig, Bovine, Rhesus Monkey)
Host:	Rabbit
Isotype:	IgG
Clonality:	Polyclonal
Immunogen:	Recombinant protein fragment contain a sequence corresponding to a region within amino acids 1 and 86 of ERH
Formulation:	0.1M Tris, 0.1M Glycine, 10% Glycerol (pH7). 0.01% Thimerosal was added as a preservative.
Concentration:	lot specific
Purification:	Purified by antigen-affinity chromatography.
Conjugation:	Unconjugated
Storage:	Store at -20°C as received.
Stability:	Stable for 12 months from date of receipt.
Predicted Protein Size:	12 kDa
Gene Name:	enhancer of rudimentary homolog (Drosophila)
Database Link:	NP_004441 Entrez Gene 13877 Mouse Entrez Gene 681415 Rat Entrez Gene 2079 Human P84090
Synonyms:	DROER
Note:	Seq homology of immunogen across species: Rat (100%), Pig (100%), Rhesus Monkey (100%), Bovine (100%)

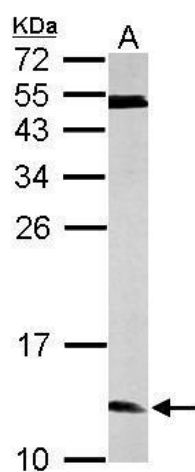


[View online »](#)

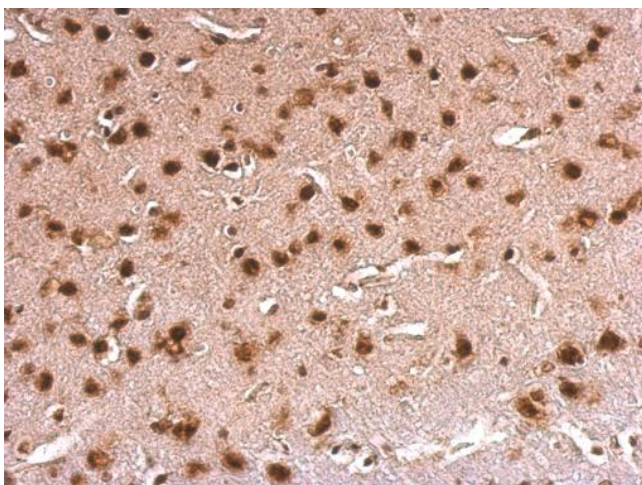
Product images:



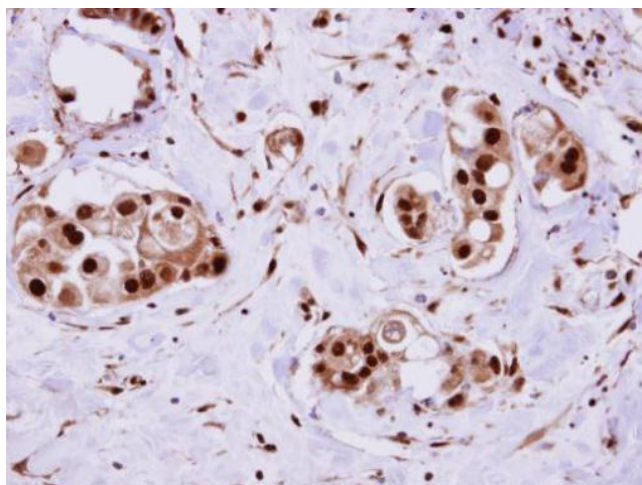
ERH antibody detects ERH protein by western blot analysis. A. 30 ug A549 whole cell extract. B. 30 ug H1299 whole cell extract. C. 30 ug HCT116 whole cell extract. 15 % SDS-PAGE. ERH antibody (TA307978) dilution: 1:500



Sample (50 ug of whole cell lysate). A: mouse brain. 15% SDS PAGE. TA307978 diluted at 1:1000.



ERH antibody detects ERH protein at nucleus on mouse fore brain by immunohistochemical analysis. Sample: Paraffin-embedded mouse fore brain. ERH antibody (TA307978) dilution: 1:500.



ERH antibody detects ERH protein at cytosol on Breast Carcinoma by immunohistochemical analysis. Sample: Paraffin-embedded Breast Carcinoma. ERH antibody (TA307978) dilution: 1:500.