

Product datasheet for **TA307975**

SEPTIN7 Rabbit Polyclonal Antibody

Product data:

Product Type:	Primary Antibodies
Applications:	WB
Recommended Dilution:	WB:1:500-1:3000
Reactivity:	Human (Predicted: Mouse, Rat)
Host:	Rabbit
Isotype:	IgG
Clonality:	Polyclonal
Immunogen:	Recombinant fragment corresponding to a region within amino acids 1 and 278 of SEPT7 (Uniprot ID#Q16181)
Formulation:	0.1M Tris, 0.1M Glycine, 10% Glycerol (pH7). 0.01% Thimerosal was added as a preservative.
Concentration:	lot specific
Purification:	Purified by antigen-affinity chromatography.
Conjugation:	Unconjugated
Storage:	Store at -20°C as received.
Stability:	Stable for 12 months from date of receipt.
Predicted Protein Size:	51 kDa
Gene Name:	septin 7
Database Link:	NP_001011553 Entrez Gene 64551 Rat Entrez Gene 235072 Mouse Entrez Gene 989 Human Q16181



[View online »](#)

Background:

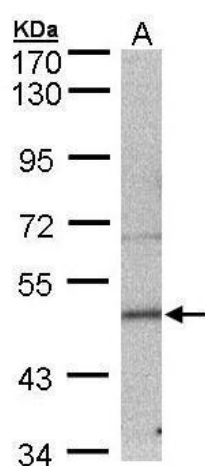
This gene encodes a protein that is highly similar to the CDC10 protein of *Saccharomyces cerevisiae*. The protein also shares similarity with Diff 6 of *Drosophila* and with H5 of mouse. Each of these similar proteins, including the yeast CDC10, contains a GTP-binding motif. The yeast CDC10 protein is a structural component of the 10 nm filament which lies inside the cytoplasmic membrane and is essential for cytokinesis. Although the exact function of this gene has not yet been determined, its high similarity to yeast CDC10 and the high conservative nature of eukaryotic cell cycle machinery suggest a similar role to that of its yeast counterpart. Alternative splicing results in two transcript variants encoding different isoforms. [provided by RefSeq]

Synonyms:

CDC3; CDC10; NBLA02942; SEPT7A

Note:

Seq homology of immunogen across species: Mouse (98%), Rat (99%)

Product images:

Sample (30 ug of whole cell lysate). A: MOLT4.
7.5% SDS PAGE. TA307975 diluted at 1:500