

Product datasheet for **TA307974**

SEPTIN7 Rabbit Polyclonal Antibody

Product data:

| | |
|-------------------------|--|
| Product Type: | Primary Antibodies |
| Applications: | IHC, WB |
| Recommended Dilution: | IHC:1:100-1:1000; WB:1:500-1:3000 |
| Reactivity: | Human (Predicted: Mouse, Chicken, Rat, Bovine) |
| Host: | Rabbit |
| Isotype: | IgG |
| Clonality: | Polyclonal |
| Immunogen: | Recombinant fragment corresponding to a region within amino acids 192 and 437 of SEPT7 (Uniprot ID#Q16181) |
| Formulation: | 0.1M Tris, 0.1M Glycine, 10% Glycerol (pH7). 0.01% Thimerosal was added as a preservative. |
| Purification: | Purified by antigen-affinity chromatography. |
| Conjugation: | Unconjugated |
| Storage: | Store at -20°C as received. |
| Stability: | Stable for 12 months from date of receipt. |
| Predicted Protein Size: | 51 kDa |
| Gene Name: | septin 7 |
| Database Link: | NP_001011553 Entrez Gene 64551 Rat Entrez Gene 235072 Mouse Entrez Gene 989 Human Q16181 |

Background: This gene encodes a protein that is highly similar to the CDC10 protein of *Saccharomyces cerevisiae*. The protein also shares similarity with Diff 6 of *Drosophila* and with H5 of mouse. Each of these similar proteins, including the yeast CDC10, contains a GTP-binding motif. The yeast CDC10 protein is a structural component of the 10 nm filament which lies inside the cytoplasmic membrane and is essential for cytokinesis. Although the exact function of this gene has not yet been determined, its high similarity to yeast CDC10 and the high conservative nature of eukaryotic cell cycle machinery suggest a similar role to that of its yeast counterpart. Alternative splicing results in two transcript variants encoding different isoforms. [provided by RefSeq]

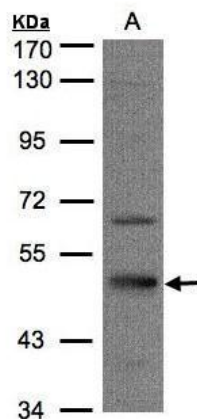


[View online »](#)

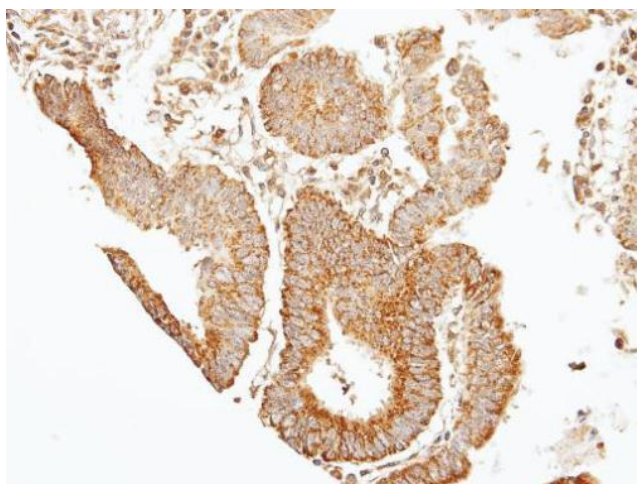
Synonyms: CDC3; CDC10; NBLA02942; SEPT7A

Note: Seq homology of immunogen across species: Mouse (99%), Chicken (99%), Rat (99%), Bovine (100%)

Product images:



Sample (30 ug of whole cell lysate). A:HeLa S3. 7.5% SDS PAGE. TA307974 diluted at 1:1000



Immunohistochemical analysis of paraffin-embedded GASTRIC CA, using 39331 (TA307974) antibody at 1:100 dilution.