

Product datasheet for **TA307973**

RAMP1 Rabbit Polyclonal Antibody

Product data:

Product Type:	Primary Antibodies
Applications:	WB
Recommended Dilution:	WB:1:500-1:3000
Reactivity:	Human (Predicted: Mouse, Rat, Pig, Guinea Pig, X. tropicalis)
Host:	Rabbit
Isotype:	IgG
Clonality:	Polyclonal
Immunogen:	Synthetic peptide corresponding to a region within amino acids 84 and 148 of RAMP1 (Uniprot ID#O60894)
Formulation:	0.1M Tris, 0.1M Glycine, 10% Glycerol (pH7). 0.01% Thimerosal was added as a preservative.
Concentration:	lot specific
Purification:	Purified by antigen-affinity chromatography.
Conjugation:	Unconjugated
Storage:	Store at -20°C as received.
Stability:	Stable for 12 months from date of receipt.
Predicted Protein Size:	17 kDa
Gene Name:	receptor activity modifying protein 1
Database Link:	NP_005846 Entrez Gene 51801 Mouse Entrez Gene 58965 Rat Entrez Gene 10267 Human O60894



[View online »](#)

Background: The protein encoded by this gene is a member of the RAMP family of single-transmembrane-domain proteins, called receptor (calcitonin) activity modifying proteins (RAMPs). RAMPs are type I transmembrane proteins with an extracellular N terminus and a cytoplasmic C terminus. RAMPs are required to transport calcitonin-receptor-like receptor (CRLR) to the plasma membrane. CRLR, a receptor with seven transmembrane domains, can function as either a calcitonin-gene-related peptide (CGRP) receptor or an adrenomedullin receptor, depending on which members of the RAMP family are expressed. In the presence of this (RAMP1) protein, CRLR functions as a CGRP receptor. The RAMP1 protein is involved in the terminal glycosylation, maturation, and presentation of the CGRP receptor to the cell surface. [provided by RefSeq]

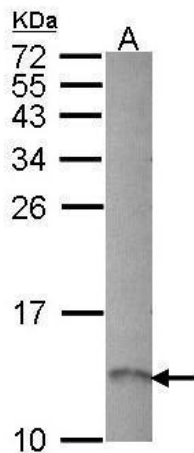
Synonyms: receptor (calcitonin) activity modifying protein 1; receptor (G protein-coupled) activity modifying protein 1; receptor-activity modifying protein 1

Note: Seq homology of immunogen across species: Mouse (93%), Rat (93%), Xenopus Tropicalis (87%), Pig (86%), Guinea pig (80%)

Protein Families: Druggable Genome, Transmembrane

Protein Pathways: Vascular smooth muscle contraction

Product images:



Sample (30 ug of whole cell lysate). A: Hep G2. 12% SDS PAGE. TA307973 diluted at 1:1000.