

Product datasheet for **TA307972**

CSDE1 Rabbit Polyclonal Antibody

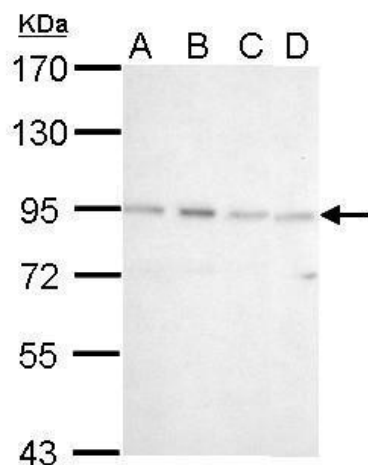
Product data:

Product Type:	Primary Antibodies
Applications:	IF, IHC, WB
Recommended Dilution:	ICC/IF:1:100-1:1000; IHC:1:100-1:1000; WB:1:500-1:3000
Reactivity:	Human
Host:	Rabbit
Isotype:	IgG
Clonality:	Polyclonal
Immunogen:	Recombinant fragment corresponding to a region within amino acids 198 and 433 of CSDE1 (Uniprot ID#O75534)
Formulation:	0.1M Tris, 0.1M Glycine, 20% Glycerol (pH7). 0.01% Thimerosal was added as a preservative.
Concentration:	lot specific
Purification:	Purified by antigen-affinity chromatography.
Conjugation:	Unconjugated
Storage:	Store at -20°C as received.
Stability:	Stable for 12 months from date of receipt.
Predicted Protein Size:	86 kDa
Gene Name:	cold shock domain containing E1
Database Link:	NP_001123995 Entrez Gene 7812 Human O75534
Synonyms:	D1S155E; UNR
Protein Families:	Transcription Factors

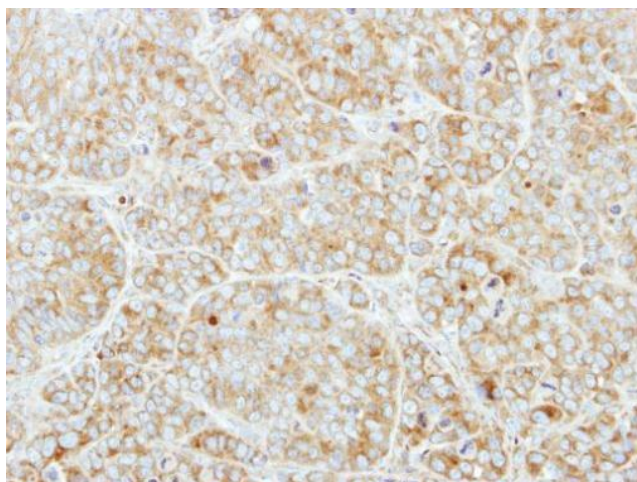


[View online »](#)

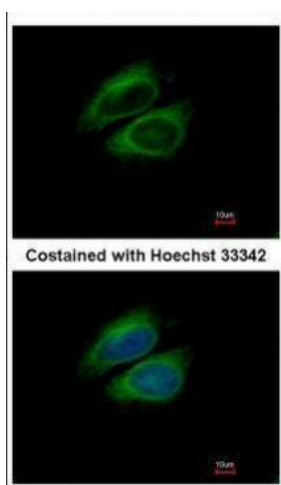
Product images:



CSDE1 antibody [N2C1], Internal detects CSDE1 protein by Western blot analysis. A. 30 ug 293T whole cell lysate/extract. B. 30 ug A431 whole cell lysate/extract. C. 30 ug HeLa whole cell lysate/extract. D. 30 ug A375 whole cell lysate/extract. 7.5 % SDS-P



Immunohistochemical analysis of paraffin-embedded MCF7 xenograft, using CSDE1 (TA307972) antibody at 1:250 dilution.



Immunofluorescence analysis of methanol-fixed HeLa, using CSDE1 (TA307972) antibody at 1:200 dilution.