

Product datasheet for **TA307967**

PPP1R16A Rabbit Polyclonal Antibody

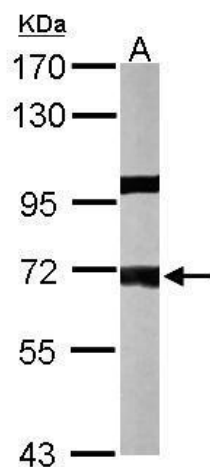
Product data:

Product Type:	Primary Antibodies
Applications:	WB
Recommended Dilution:	WB:1:500-1:3000
Reactivity:	Human, Mouse (Predicted: Rat)
Host:	Rabbit
Isotype:	IgG
Clonality:	Polyclonal
Immunogen:	Recombinant fragment corresponding to a region within amino acids 83 and 464 of PPP1R16A (Uniprot ID#Q96I34)
Formulation:	0.1M Tris, 0.1M Glycine, 10% Glycerol (pH7). 0.01% Thimerosal was added as a preservative.
Concentration:	lot specific
Purification:	Purified by antigen-affinity chromatography.
Conjugation:	Unconjugated
Storage:	Store at -20°C as received.
Stability:	Stable for 12 months from date of receipt.
Predicted Protein Size:	58 kDa
Gene Name:	protein phosphatase 1 regulatory subunit 16A
Database Link:	NP_116291 Entrez Gene 73062 MouseEntrez Gene 362944 RatEntrez Gene 84988 Human Q96I34
Synonyms:	MYPT3
Note:	Seq homology of immunogen across species: mouse (84%), Rat (85%)

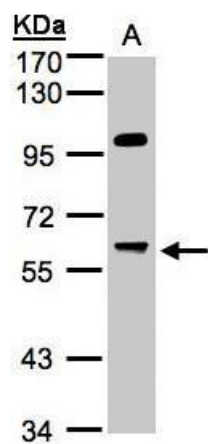


[View online »](#)

Product images:



Sample (50 ug of whole cell lysate). A: mouse liver. 7.5% SDS PAGE. TA307967 diluted at 1:1000.



Sample (30 ug whole cell lysate). A: Hep G2. 7.5% SDS PAGE. TA307967 diluted at 1:1000